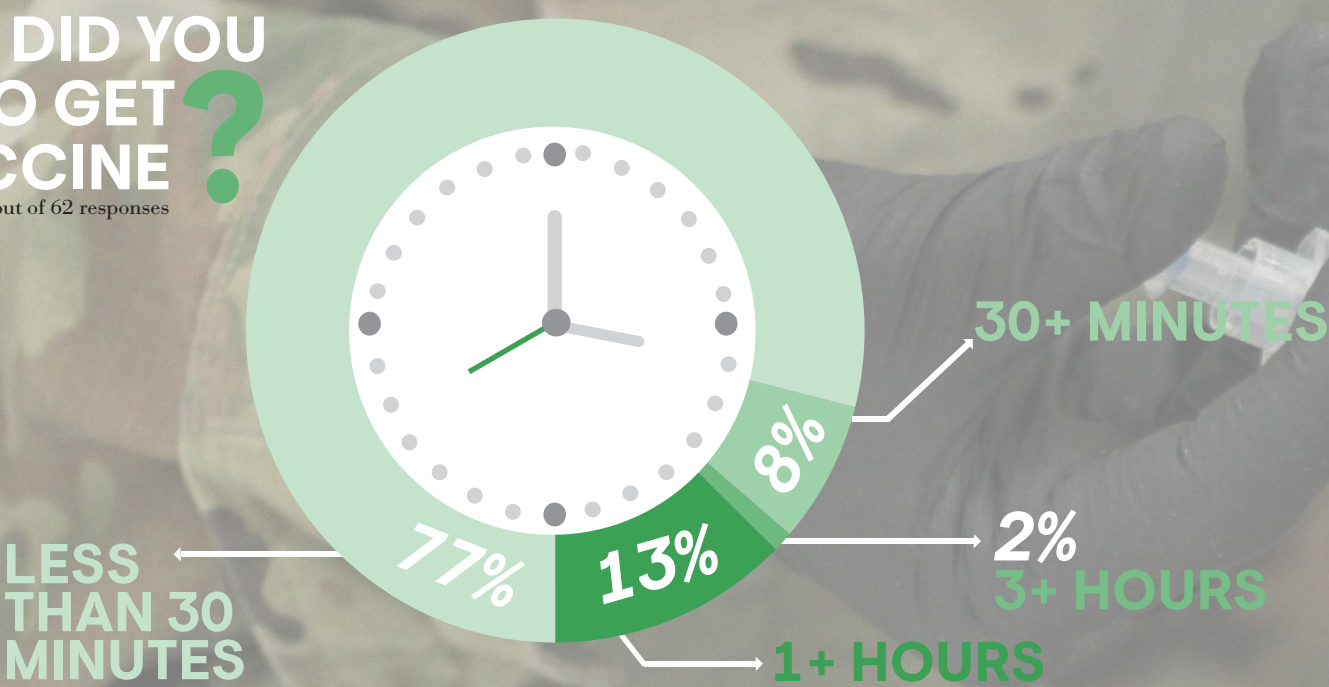


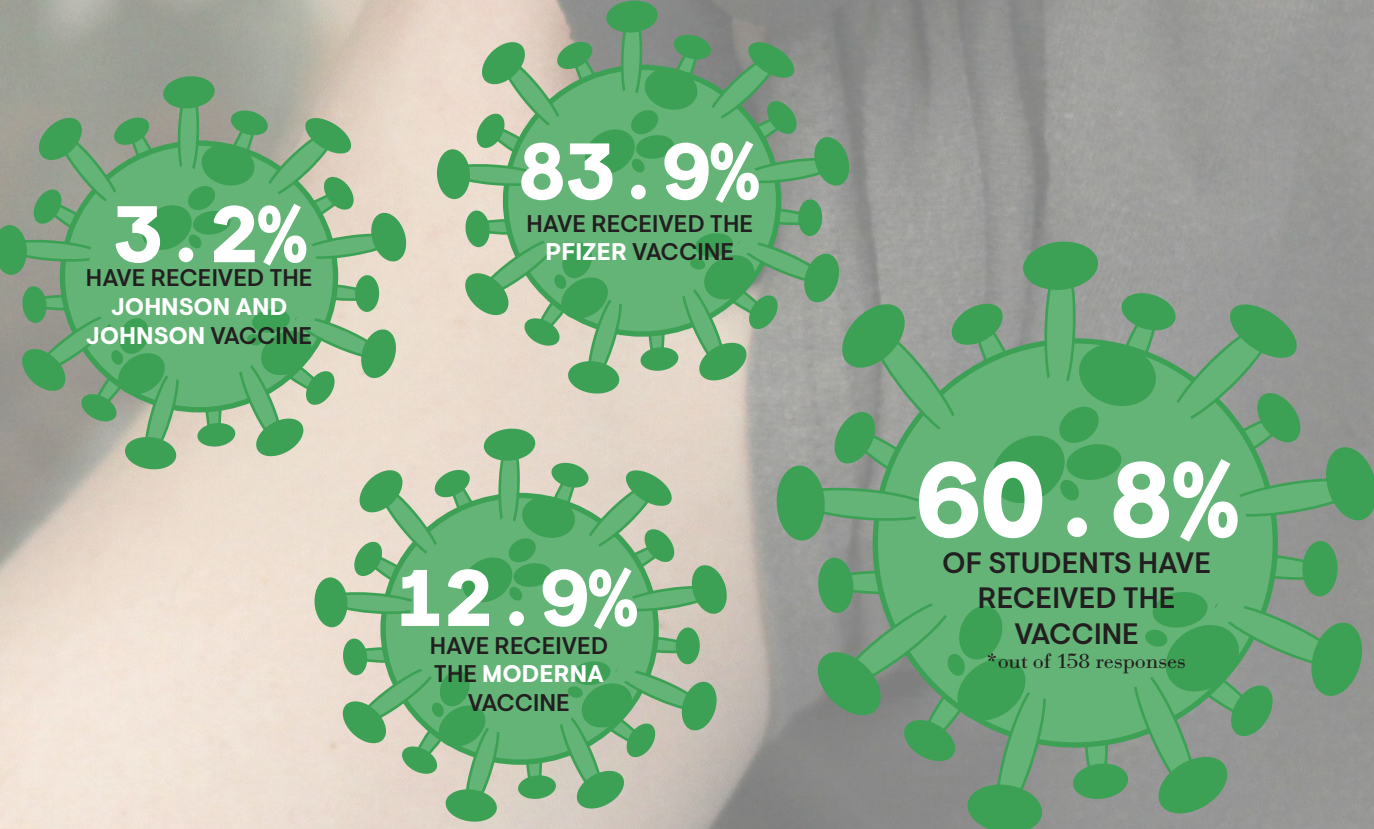
HOW FAR DID YOU TRAVEL TO GET YOUR VACCINE?

*out of 62 responses



CALLING THE SHOTS

COVID-19 VACCINE 195



PHASING OUT COVID-19

ST. LOUIS COUNTY OUTLINES THE PHASES OF WHICH RESIDENTS WILL BE ELIGIBLE TO RECEIVE THEIR COVID-19 VACCINE

PHASE 1A	PHASE 1B	PHASE 2	PHASE 3
LONG TERM CARE FACILITY RESIDENTS AND STAFF	FIRST RESPONDERS AND EMERGENCY	ACCELERATING ECONOMIC RECOVERY	ALL MISSOURI RESIDENTS
HEALTHCARE WORKERS	HIGH-RISK INDIVIDUALS	DISPROPORTIONATELY AFFECTED POPULATIONS	
EMS/EMT/ PARAMEDICS	CRITICAL INFRASTRUCTURE	HOMELESS	

OPINIONS ON THE NEW COVID-19 VACCINE

"I'M NOT SURE YET , MY FAMILY IS ON A DIFFERENT POLITICAL SPECTRUM THAN MOST OF THE VACCINE RECIPIENTS . MY DAD ESPECIALLY BELIEVES IT'S RISKY AND HE HAS AN AUTOIMMUNE DISORDER [SO] YOU'D THINK HE'D GET IT . "

-RAMINA MELIKOVA , 11

"THE MRNA TECHNOLOGY HAS BEEN STUDIED FOR OVER A DECADE AND IS NOT COMPLETELY NEW . I ACTUALLY THINK THE MRNA SEEMS TO BE SAFER THAN THE OTHER KINDS OF VACCINES BECAUSE OF THE SCIENCE BEHIND HOW IT WORKS . "

-MARIA PAUL , 12

"AT THIS POINT HUNDREDS OF MILLIONS , IF NOT BILLIONS , OF PEOPLE HAVE GOTTEN THESE VACCINES OVER THE SPAN OF ALMOST A YEAR WITH NO LIFE-THREATENING SIDE EFFECTS . IT IS ALSO IN THE COMPANY'S BEST INTEREST TO MANUFACTURE A SAFE VACCINE THAT PASSES CDC AND THE AMERICAN PUBLIC'S STANDARDS . "

-MILES BOYKO , 9

VACCINATION REPUTATION

"I DON'T THINK I GOT MICROCHIPPED OR ANYTHING , BUT AS FAR AS I KNOW A VACCINE HAS NOT BEEN DEVELOPED THIS FAST BEFORE . THERE IS NO REAL WAY TO KNOW IF THERE ARE LONG TERM SIDE EFFECTS . THE J&J VACCINE [IS] SAID TO HAVE CAUSED BLOOD CLOTS . "

-HAROLD LUTZ , 10

"I AM CONCERNED ABOUT THE POTENTIAL DELAYED AND LONG-TERM SIDE EFFECTS THAT NOBODY COULD HAVE SEEN . REGARDLESS , I AM SCHEDULED TO GET A PFIZER VACCINE BECAUSE THE BENEFITS ARE GREATER THAN MY CONCERNS . "

-VIVIAN SIMPSON , 11

"THE CDC HAS MORE REGULATIONS HERE THAN MOST OTHER COUNTRIES . IF IT WASN'T SAFE , THE VACCINES WOULDN'T HAVE BEEN APPROVED . "

-MEGAN MCGHEE , 12

"I BELIEVE IN VACCINES , BUT THIS PROCESS WAS EXTREMELY RUSHED . "

-ELI LINDSEY , 9

story by Kiera Finley
design by Grace Manion
photo by Hannah Moore

9

COLOR

Run Prepare for Submission for Color ID information.

Job No: 032357

Page No. 194
(even pages)

School Name: Kirkwood High School

Run Prepare for Submission when this spread is complete to submit to the plant. Using PFS will help ensure your pages print without delays.

Names of tagged colors should appear in this box.

TCID:PP

Spec. Instr.

YearTech
ID CC 2020
Windows

Customer is responsible for element placement for accurate book trim.

Job No: 032357

Page No. 195
(odd pages)

School Name: Kirkwood High School

Run Prepare for Submission when this spread is complete to submit to the plant. Using PFS will help ensure your pages print without delays.

Spec. Instr.

TCID:PP

COLOR

Run Prepare for Submission for Color ID information.

Names of tagged colors should appear in this box.

9

YearTech
ID CC 2020
Windows

Customer is responsible for element placement for accurate book trim.

JOSTENS