

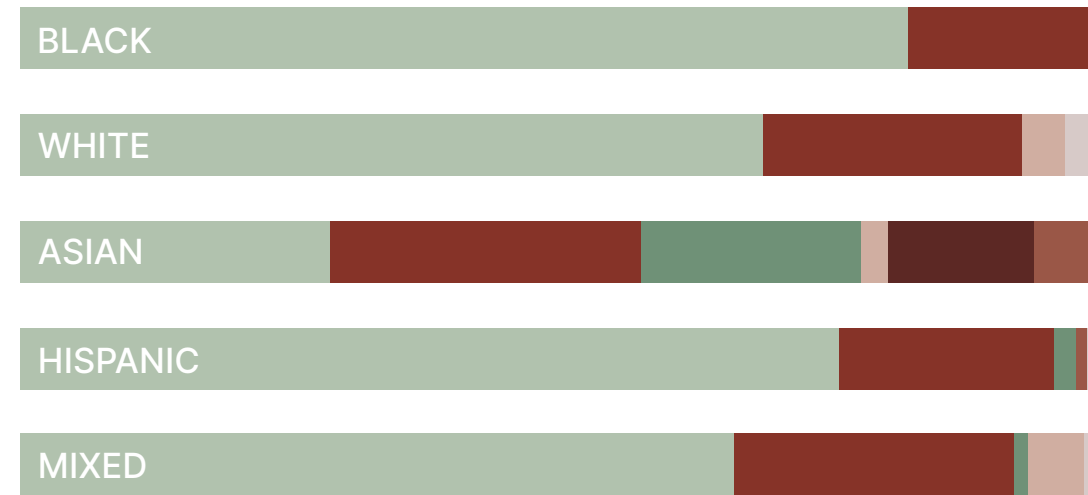
# ASPECTS OF *Culture*

Inspecting various parts of culture and their relation to community

## RACE & RELIGION

Panorama surveyed 161 students via voluntary Google Form Oct. 25

Correlations between racial and religious communities



### KEY

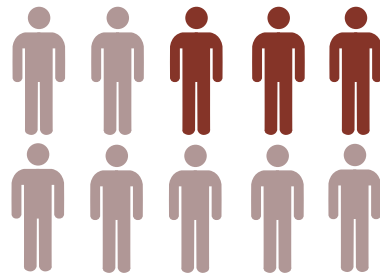
- Christian
- Atheist
- Muslim
- Other
- Buddhist
- Hindu
- Jewish

illustration by | MAC HUFFMAN & LUCY LOCHMOELLER

## STAYING CONNECTED

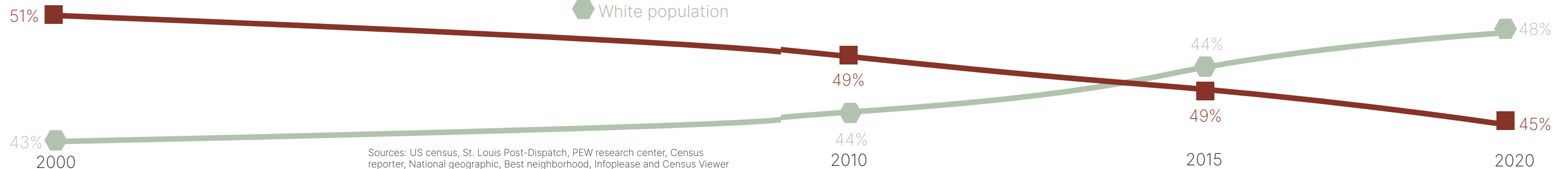
Ladue students reflect on their relation to culture

**3 IN 10** STUDENTS FEEL DISCONNECTED FROM THEIR CULTURE



## PICTURING POPULATIONS

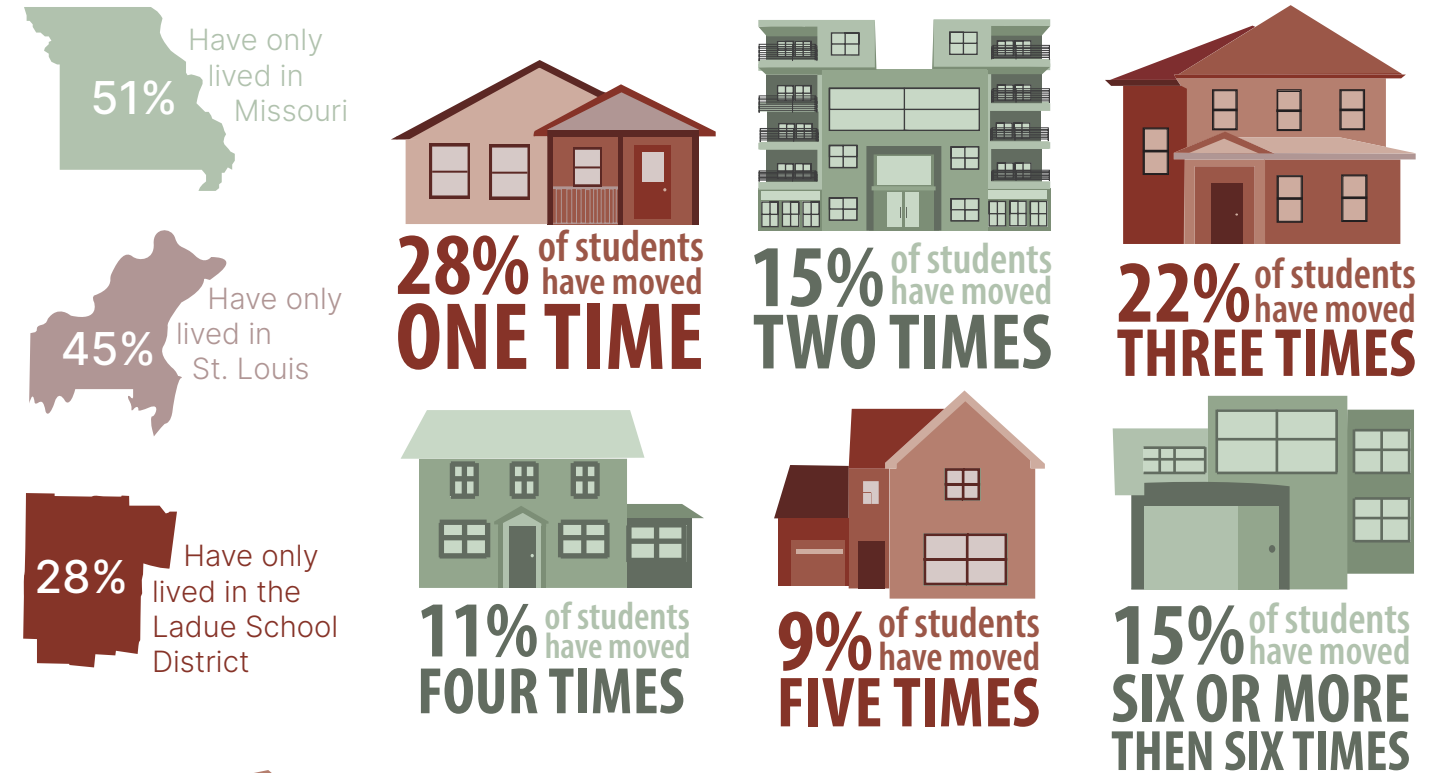
Change in white versus Black populations in St. Louis City



Sources: US census, St. Louis Post-Dispatch, PEW research center, Census reporter, National geographic, Best neighborhood, Infoplease and Census Viewer

## KEEP IT MOVING, KEEPING COUNT

Looking at how many times students have moved and where they have lived previously



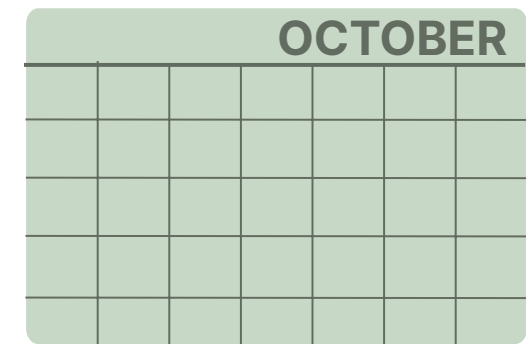
## VALUES & FAMILY

Ladue's values as a community and individuals



**93%** of families HIGHLY VALUE EDUCATION

**75%** of families HIGHLY VALUE OR SOMEWHAT VALUE RELIGION



**63%** of families attend RELIGIOUS SERVICES NEVER OR ONCE EVERY FEW MONTHS