

THE

Quarter Two 2019 • Volume 5, Number 2

# AGLE EYE



# GLOBAL WARNING



# THE EAGLE EYE

Quarter Two 2019 • Volume 5, Number 2

Front Cover: Graphic by Darian Williams

## SPECIAL SECTION: GLOBAL WARNING

# 11

### STAFF WRITERS

Matthew Rosenthal  
Charlie Goodman  
Anna Bayuk  
Sam Grizelj

Leah Ronkin  
Ivy Lam  
Anisah Steele  
Elama Ali

Photo by Darian Williams



Editorial Cartoon by Leah Ronkin

The opinions expressed in this paper are not necessarily those of Marjory Stoneman Douglas High School or Broward County Public Schools. The publication is a member of the Florida Scholastic Press Association, the National Scholastic Press Association, the Columbia Scholastic Press Association and the Southern Interscholastic Press Association. If you would like to advertise please call (754) 322-2150 or email MSDEagleEyeNews@gmail.com

Visit us at: [eagleeye.news](http://eagleeye.news)

@HumansofMSD on Instagram

@EagleEyeMSD on Twitter

@EagleEyeMSD on Instagram

@MSDEagleEye on TikTok

## 03 MSD IN BRIEF

New developments occur at MSD

## 04 LETTERS TO THE EDITOR

MSD student body shares their perspective on various issues

## 06 BEYOND THE BINARY

Transgender and non-binary students struggle with misgendering

## 09 CHOOSE YOUR CHALLENGER

Democratic candidates vie for the party's nomination

## 12 HAVOC IN OUR HABITAT

South Florida faces a variety of environmental issues

## 17 MEET THE INVADERS

Non-native species continue to negatively impact Florida

## 18 CLIMATE IN CRISIS

National climate movement partners with local activists

## 20 MEAN, GREEN, CARBON MACHINE

MSD's growing carbon footprint has changed how the school consumes energy

## EDITORIAL BOARD

DARA ROSEN  
BRIANNA FISHER  
LENI STEINHARDT  
ZOE GORDON  
Editors-in-Chief

AVA STEIL  
KATRINA WHITE  
ASHLEY FERRER  
RYAN SERVAITES  
NADIA MURILLO  
MACKENZIE QUINN  
FALLON TRACHTMAN  
Copy Editors

DARIAN WILLIAMS  
BRYAN NGUYEN  
BRIANNA JESIONOWSKI  
FENTHON ARISTHOMENE  
Photo Editors

JULIA NOYE  
JENNA HARRIS  
Sports Editors

TAYLOR YON  
Business Manager

EINAV COHEN  
Managing Editor

KACIE SHATZKAMER  
Assistant Business and  
Managing Editor

JASON LEAVY  
KALEELA ROSENTHAL  
Assistant Editors

MELISSA FALKOWSKI  
Adviser

## 23 REDUCING YOUR CARBON FOOTPRINT

Students find ways to reduce their own carbon footprints

## 25 REDUCE, REUSE, RECYCLE

Save What's Left focuses on saving the environment

## 27 LOCALS ONLY

Local, sustainable companies and farms increase in popularity in Parkland

## 29 SUSTAINABLE STARTUP

'Biggest Little Farm' documentary demonstrates need for ethical and sustainable farming

## 30 THERE IS NO PLANET B

Climate change is a real, serious issue that needs to be addressed

## 31 LET'S MAKE A DEAL

Green New Deal aims to address climate change through sweeping reform

## 31 ONE STEP AT A TIME

MSD should be taking steps to reduce their carbon footprint

## 33 FUN IN THE SUN

MSD student and staff participation in outdoor activities creates healthier lifestyles

## 35 H19TORY MADE AT MSD

MSD football team proves doubters wrong in historic 2019 season



# MSD IN BRIEF

New developments occur at MSD

## REACH FOR THE STARS

MSD Drama Club performs "Peter and the Starcatcher"

Marjory Stoneman Douglas High School's Drama Club presented their fall production, "Peter and the Starcatcher," based on the 2004 novel by Dave Barry and Ridley Pearson, on Nov. 7-9. The play is a prequel to the story of Peter Pan.

"From the time that I select plays is almost a year. I'm constantly in search of plays that are good for my students that will be exciting, challenging and artistic for them," drama teacher Melody Herzfeld said.

Following the unveiling of the selected cast members, students took their own pathways to make their characters come to life. This ranged from memorizing lines to going beyond limits the actors and actresses never knew they could surpass.

"After I learned my lines, I took a new approach. I said I'm going to try to inhabit the character and become the character instead of just Jared playing Smee," senior Jared Block said.

The production crew oversaw the technical and artistic aspects of the show, mainly lighting and props.

"Throughout the rehearsal process, we would have meetings every so often, and we would get all of our scripts together and make sure we have the same cues," production stage manager Alexandra Duffy said.

Act one began with the capture of three orphans: Peter Pan, played by senior Logan Weber; Prentiss, played by

senior Andrea Peña; and Ted, played by senior Tanzil Philip. Senior Ryan Senatore played the villain of the story, the mischievous pirate, Black Stache.

"I felt like I got some solid laughs out of the audience. Whether they were laughing with me as Black Stache on his journey to find a hero to fulfill his pirate fantasy, or at me with my facial hair malfunction that occurred a bit too frequently," Senatore said.

The play covers the adventure Peter, Prentiss and Ted embark on at Mollusk Island. They meet a mysterious girl named Molly Aster and together overcome cohorts of pirates and thieves in their quest to protect an important trunk of star stuff, magical dust that alters people, from falling into the wrong hands.

"I had to dress up as a mermaid and sing [on] the ukulele. I learned how to play the ukulele for this show actually," Block said.

The cast was required to escape comfort zones to perfect their roles.

"I'm not used to playing adult men, because like, I still have a high voice. I'm still a child," freshman Logan La Pierre, who played Captain Robert Falcon Scott, said.

The costumes were assembled by costume designer Penny Williamson and the sets were created by set maker Beau Regard. Professional pianist Esther Umansky-Roth supplied live music for the



**A Pirate's Life.** Seniors Jared Block and Ryan Senatore portray the characters of Smee and Black Stache on the opening night of MSD's production of "Peter and the Starcatcher." The pair made up the antagonist side of the musical. *Photo by Sam Grizelj*

production.

Throughout the play, questions about the origins of Peter Pan, Molly Aster's identity, and Tinkerbell's origin story were all answered.

"I looked at [the play] from a mom's perspective because I was watching my two little ones watch the show. And the belly laughs that came out of them were unbelievable," Student Government Association Adviser Danielle Driscoll said.

Numerous teachers were in attendance all three days of the production to support Herzfeld and her students.

"I thought the flexibility of the stage was excellent—the way that they

converted the stage from act one to act two, with the way the leaves were mobile and [the] use of different sheets of ribbon to create the effects of water," speech and debate teacher Jacob Abraham said.

Drama as a whole supports their own program through car washes, candy sales and many other fundraisers. "Peter and the Starcatcher" was sponsored by Temple Beth Chai and Marty Feldman's SAT/ACT Prep and advertised by Taverna Evia and Coral Springs Center for the Arts. The money Drama Club earned from selling around 200 tickets each night at the play will cover the costs of the same production. *Story by Ivy Lam*

## MEDIA MODIFICATION

MSD's media center renovated by Orange Bowl Committee

Students and staff of Marjory Stoneman Douglas High School had the chance to view and explore a new addition to the media center: the STEAM Lab. This lab was built to encourage comfortable, collaborative work and communication amongst its users.

From Nov. 16-18, a corner of the media center was redesigned to create a new lab filled with three wireless Promethean ActivePanels, new tables (some including dry-erase boards as the flat top surface) and chairs, two large shelves, a couch and a mini-office area. On Monday, Nov. 18, a select group of MSD students and staff of had the chance to experience and explore the new STEAM Lab.

The new additions to the media center were donated to help students learn more efficiently; the innovative Promethean ActivePanels and dry erase tables allow students to write on them to solve problems or take notes and the new virtual reality system enhances student experience and engagement through a creative way. By playing the educational games embedded in the system, students are able to use virtual reality to increase their knowledge on a specific subject.

The renovation was a gift from the

Orange Bowl Committee, a non-profit organization based in Miami Lakes, Florida, which has renovated six libraries throughout Broward County Public Schools and who reached out to MSD in February 2018.

Throughout the years, small transformations have been made to the media center.

"This is my fifth year here," Media Specialist Diana Haneski said. "From the moment I started working here, I tried to do something to improve the library. For example, when I got here, I got soft seating, removed some of the things that were taking up a lot of space and added other furniture."

Haneski, Principal Michelle Kefford, Superintendent Robert Runcie, Executive Director of the College Football Playoff Foundation Britton Banowsky, CEO of the Orange Bowl Committee Eric Polms, First Vice Chair of the Orange Bowl Committee Jack Seiler, Director of Innovative Learning for Broward County Public Schools Daryl Diamond and Broward County Commissioner Michael Udine were present for the Nov. 18 reveal.

Haneski cut the ribbon and the Orange Bowl mascot, Obie, walked around and



**New and Improved.** Media Specialist Diana Haneski, along with the mascot of the Orange Bowl Committee, Obie the Orange, welcome students and staff to enjoy the newly renovated media center on Monday, Nov. 18. In order to match the new look, the addition to the media center was named the STEAM Lab. *Photo by Darian Williams*

took pictures with many attendees.

"Libraries [have] evolved over the years from a place where students just check out books to a space where collaboration takes place, where learning takes place," Kefford said. "They play an integral role in our students' learning. It's not just about checking out a book and reading it independently; it's about working together and creating a space that is inviting and collaborative."

The STEAM Lab can be used by all students and teachers throughout the day.

"I definitely plan to use the 'STEAM Lab' during my personalization period," senior Teyenne Jonca said. "When I have

to finish annotation my book for AP [literature], I can come here to sit at one of these tables and work or if I want to work on AP [calculus] homework, I can use the [Promethean ActivePanels and dry erase tables] to practice problems."

With the increase of technology within the school system, the STEAM Lab aids in the motivation of learning in an interactive and efficient way.

MSD's students and staff can use the different additions, not only play games during their spare time, but also increase their knowledge by utilizing them as a unique method of study. *Story by Elama Ali*



# LETTERS TO

## Fashion Faux Pas

Dear Editor,

I think the school needs to either enforce the dress code or ignore it completely.

Either get all staff members on board with it or just tell everyone to disregard it completely. I have a friend who was dress-coded a few weeks ago because her skirt was “too short,” even though she was wearing leggings underneath.

A few days ago, I saw many girls with skirts much shorter, to the point their butt cheeks were out, with nothing else underneath, and I did not see even one of them get dress-coded. Maybe they eventually did, but the fact that they were able to walk into the school and weren’t immediately stopped like my friend was is wrong.

The staff cannot simply dress-code some then not others; it’s not fair.

Everyone needs to be on the same page when it comes to that because what kind of message is that sending to our school’s girls? That some bodies are less appropriate than others?

If there is going to be an enforced dress-code, get everyone or just don’t bother at all.

*Lana Licari, 11*

## Straight Eight

Dear Editor,

I think it would be much more beneficial to meet in each of my classes every single school day. Sometimes, I am only in a class two times for the entire week.

This causes knowledge of a specific topic to be lost. An example is my AP Physics class.

In physics, we are learning very complicated concepts, processes and formulas every day we have class. I understand the lesson as it is being taught that day. When I get back to class a couple days later, or even up to four days when there is a weekend, I forget most of what I have learned.

I also believe that teachers are unable to teach as much as they want in an hour and a half period, because it is hard to lecture students for that long.

I think it is difficult at times sitting in a particular class without much of a break.

I know changing back to a regular 8-period day could be very complicated and difficult to change, but all I am asking is for this to be considered.

I feel as if this would greatly benefit both the teachers and students of MSD.

*Brett Lickerman, 11*

### SEND US A LETTER

Have something to say about school? Have something to say about a local, national or global issue? Have something to say about this issue of The Eagle Eye? We want to hear your opinions.

Email submissions to:  
msdeagleeyenews@gmail.com

Submissions must be between 100-250 words

## Trash the Tardy Pass

Dear Editor,

When a student is late for class, isn’t all of their classmates and teacher staring at them enough of a punishment? Apparently, it isn’t. If a student walks through the red gates of any entrance to the school on time, then they don’t deserve a tardy pass. While you might get through the gates on time, what about walking to your class?

This school is so large with so many students and buildings, it might take you a minute to get there. Well, that minute might be all it takes to get you sent back from your class for a pass. When a student comes to class without a pass, that obviously means they were here, just walking to their class. If a teacher has to

then tell that student, who might have only been a minute late, to go down and get a pass, that just wastes more time. Now, instead of that student only missing the first minute of class, they miss the first five. What is the point of these tardy passes if they only serve to make students even more late? Even if you weren’t here on time, to have to wait in line to get your ID scanned so a custom pass can be printed out takes way more time than necessary. This is also a waste of paper because your teacher can just mark you late electronically.

No one even collects the tardy pass, so why do you need a printed pass to say you’re late; the teacher already knows.

*Erika Wilczek, 10*

## What It Takes

Dear Editor,

I’ve been stressing a lot lately, mostly about college acceptance.

Everyone has always made it seem as though college is required to be successful in life and that one stupid mistake in high school can ruin it all.

I always thought that I would get into college easily, but now there is more competition than ever. It seems like there is always someone that’s above you in your work.

For example, I am an honors student with a few AP classes, and seeing all my friends with all AP classes and dual

enrollment makes me feel like I should be doing more and doing better.

You can imagine how much more it brings me down to learn that a majority of these friends, who seem to be doing great, are actually cheating most of the time.

To most people, cheating is morally wrong, but that doesn’t excuse the fact that colleges look at mostly grades and do not dig into your morales or your personality.

I will always try to be honest with my work; I feel as though it will pay off in the future, even if colleges do not notice it.

*Charles Cahill, 11*

## Spare Me the Lecture

Dear Editor,

In high school there is one issue that I find challenging to navigate; it is the way some teachers teach. Some teachers lecture the class for around 60 minutes on one lesson.

This is two-thirds of the class time period. During this time, many students do not see this beneficial towards their learning abilities.

Most students learn better with hands-on activities and visually seeing the material. Also, lecturing does not allow the students to interact and have an open discussion. Instead, they are sitting in desks for a prolong period of time, trying to remember information

that is expressed to them. Moreover, a vast majority of students do not have a long attention span, so the material that is presented to them in this time of lecturing, they may not comprehend it because they are not engaged in the lecture.

Teachers should make learning enjoyable for the students by having open discussions and more engaged learning activities.

This will allow the students to memorize the lesson that was presented to them in class better. Without lecturing, the students will be more committed to learning.

*Madison Lenard, 10*

## Homework Overload

Dear Editor,

I find it very frustrating with the amount of homework that teachers are allowed to give.

Many students are involved in clubs, sports and extracurricular activities that take up a lot of time after school. Most students are up until 12 p.m., or even 1 a.m. finishing homework from all seven classes.

I personally believe that teachers should cut back on the amount of homework they give and try doing more teaching activities in class.

Some of my teachers waste time in class and then assign a lot of homework for us to do.

I think that homework is a good way to check your understanding of a subject and help you learn the material, but I also think that some teachers give excessive amounts of work that could be done in class.

We all have very busy schedules in and out of school that make it harder for students to work on all of the homework assigned.

*Gabby Fisher, 10*

## Tackling Trauma

Dear Editor,

Ever since the tragedy that occurred at MSD, life at school is tougher than imagined.

As high school is already traumatic and emotionally consuming, the pressure of doing your best and keeping your GPA up grows to be more difficult.

I personally struggle on a daily to be tranquil on campus and focus within lessons. The importance of watching out for one another has now become a priority for the entire school.

Mental health and emotional well-being are crucial to be aware of at these times.

My friends and I have always discussed how demanding the teachers at our school are, as well as being unforgiving when it comes to moments that we are absent due to personal issues.

I believe that through everything we have been through, the struggle with keeping up with everything with school, home, after school activities and social life has been harder to comply with.

We feel as we are being left behind in a world moving too fast.

Finding a way or an outlet to compromise with teachers about how we are struggling and coming to an understanding is crucial for us to do better in school.

At the end of the day, we still must come back here every day and accept what happened in the past and move forward.

Although our pain and loss will never be forgotten, being able to cope with in our classes other than having to leave and miss the lesson is a good solution for both sides of the teacher and students.

*Melissa Camilo, 12*

## Courtyard Code

Dear Editor,

Most sports teams have logos; these logos are what the team and the fans look up to. In the sport I play, hockey, the team has a logo on the floor in the locker room.

The logo is never to be walked on because it is against the moral “code,” and considered disrespectful to the logo and the team.

Last year, our school logo was painted in the middle of the courtyard. Ever since that logo was painted, none of my friends, including me, walk on the logo because we believe it is disrespectful to the logo and school. Now that we have that logo, I think it should be brought up at assemblies etc; the meaning of the logo and why it should not be walked over.

Even if people do not play sports, it is still disrespectful to walk over the logo, just like it is disrespectful for the American Flag to touch the ground.

*Jude Lenamon, 11*



# THE EDITOR

## No Laughing Matter

Dear Editor,

I'm a transgender student who just wants to get through high school.

I don't think that non-LGBT students and staff realize the struggle transgender students go through on a daily basis.

I'm not complaining about the "I identify as an attack helicopter" memes because I find them funny to an extent. I'm complaining about the fact that transgender people are ridiculed on a daily basis, how our identities are seen as jokes for the masses.

I live in fear of being harassed and being disowned. I had to come to terms with the fact that my parents won't be in my life after I come out because of who I am. I want people to understand the struggles that transgender students have to go through.

Jason Hameed, 11

## Graphic Worth 1000 Words

Dear Editor,

I want to know who in their right mind chose the ridiculous graphic on page 15 of the first quarter's Eagle Eye. It was allegedly a last-minute backup image because the original image didn't work, which was not approved by neither Anna nor Marisol.

The article explained being trans very well, but people don't take us seriously. What kind of joke is being male with a female arm?

Trans people face discrimination every single day. Take it from me, I'm a trans guy. Hearing classmates ridicule

trans people because of a dare I say insensitive graphic makes me unbelievably uncomfortable.

Before the end of the first quarter, my safety was a concern but not nearly as much as it is now. It's not fair to the trans folk, including closeted, for a graphic like that to portray trans people. Maybe run it by trans people or someone who knows a thing or two about being LGBTQ.

Why not listen to the people interviewed for the article? "It puts me in a really uncomfortable and embarrassing place, and it makes it much harder to come out when I'm worrying about

whether or not I'll even be taken seriously."

Imagine how embarrassing it is for a good portion of the school laughing at what they now think is "being transgender."

I can tell you right now, without even knowing the person, the person who put that graphic on the cursed page 15 of the first quarter's Eagle Eye would not put that for our peers to see. We wouldn't embarrass ourselves for that.

So thank you for embarrassing us. Thanks for ruining our reputation.

Carter Rajaofera, 12

## Sending Out Mixed Messages

Dear Editor,

In the 2019 quarter one edition of the Eagle Eye, there is a graphic on page 15 paired with the article "Beyond The Binary." The graphic shows a blue icon of a person and a pink icon of a person in a dress (similar to bathroom signs) with the body parts mixed and matched over 35 different icons. For example, one is a blue person with a pink arm. Another is a pink head, a blue body and a pink leg.

This image does not represent the transgender community. It confuses people who are trying to learn and understand the LGBTQ community because it is not accurate. What significance does this image hold?

Instead of helping guide people to understand the article, it implies that transgender people are only what their bodies are. Furthermore, when people do not understand the transgender

community, this image becomes an easy target for transphobic jokes—intentional or not.

I believe the intention of the articles was to inform people about the transgender community and about they/ them pronouns, but with the graphic included, it is taking one step forward and two steps back.

I am quoted in the article for saying "[I feel] like I have to justify myself

just for existing." With the feedback I'm getting as a non-binary person to this graphic, I feel this is one of those moments.

Next time MSD Eagle Eye writes about the transgender community, please make sure that the terms you use and the graphics you pick accurately represent the community you are trying to represent.

Caspern Becher, 11

# LETTER FROM THE EAGLE EYE

Dear Readers,

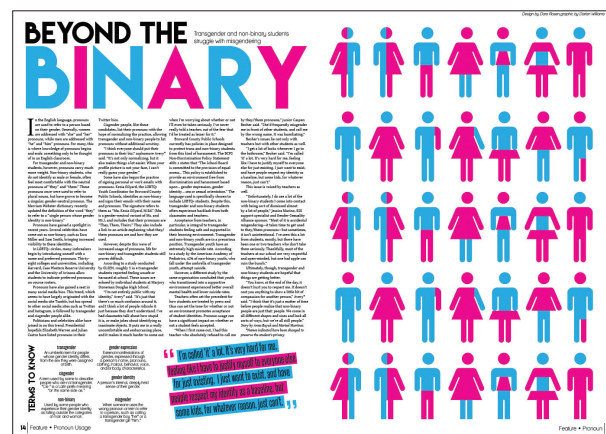
As an editorial board, we apologize for the problematic graphic on page 15 of the Eagle Eye's first quarter print edition that was distributed in October of the 2019-2020 school year.

Our purpose with every article is to pair it with a photo or graphic that correctly reflects the content in the article. We realize that the graphic that was paired with the article "Beyond The Binary" did not accomplish this.

We recognize that this graphic offended students within the LGBTQ+ community of our school, and while it was never our intention to insult anyone, we understand and regret that we did.

Our intention with the original graphic was to show that people do not necessarily fit into the gender stereotypes constructed by society.

Accurately representing the experience of the diverse communities within our school is very important to our staff. We took this particular topic seriously, and it was our goal to promote a general understanding within the wider school population about the experiences of transgender and non-binary students and to encourage our school community



Original graphic printed in the October 2019 Eagle Eye print edition

to use individuals' preferred pronouns as a way of showing respect and tolerance towards all students.

Unfortunately, some MSD students misinterpreted the intention of the graphic, and used it to make fun of their LGBTQ+ peers on social media.

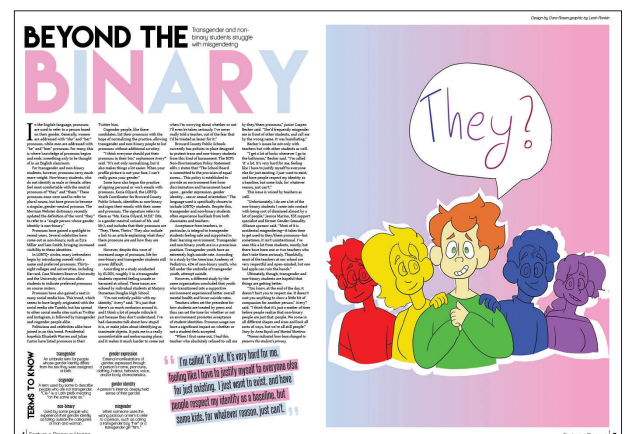
We did not mean to provoke mockery of people's identities through this graphic, and we are sorry that our graphic prompted these interpretations.

We acknowledge our misstep and our role in what occurred on social media. We

have reprinted the article "Beyond the Binary" on page 6 of this print edition with a graphic that better reflects the message of the article.

It is our hope that this new graphic will inspire students to read the article and reflect on their treatment of their peers.

To the students that felt it was appropriate to make fun of transgender and non-binary students on social media, you may not realize the hurt that you have inflicted on your peers, but your words and actions matter. We encourage you to



New graphic printed in the December 2019 Eagle Eye print edition

remember to be accepting and inclusive to all, especially those in our school community.

Additionally, we greatly appreciate the feedback we received on this graphic. The MSD student body pushes us to be better every day, and we continue to grow and learn as a result.

Going forward, we will continue to work to promote respect, kindness and understanding of all students of all identities.

The Eagle Eye Editorial Board



# BEYOND THE BINARY

Transgender and non-binary students struggle with misgendering

In the English language, pronouns are used to refer to a person based on their gender. Generally, women are addressed with “she” and “her” pronouns, while men are addressed with “he” and “him” pronouns. For many, this is where knowledge of pronouns begins and ends: something only to be thought of in an English classroom.

For transgender and non-binary students, however, pronouns carry much more weight. Non-binary students, who do not identify as male or female, often feel most comfortable with the neutral pronouns of “they” and “them.” These pronouns once were used to refer to plural nouns, but have grown to become a singular, gender-neutral pronoun. The Merriam Webster dictionary recently updated the definition of the word “they” to refer to a “single person whose gender identity is non-binary.”

Pronouns have gained a spotlight in recent years. Several celebrities have come out as non-binary, such as Ezra Miller and Sam Smith, bringing increased visibility to these identities.

In LGBTQ+ circles, many icebreakers begin by introducing oneself with a name and preferred pronouns. Thirty-eight colleges and universities, including Harvard, Case Western Reserve University and the University of Arizona allow students to indicate preferred pronouns on course rosters.

Pronouns have also gained a seat in many social media bios. This trend, which seems to have largely originated with the social media site Tumblr, but has spread to other social media sites such as Twitter and Instagram, is followed by transgender and cisgender people alike.

Politicians and celebrities alike have joined in on this trend. Presidential hopefuls Elizabeth Warren and Julian Castro have listed pronouns in their

Twitter bios.

Cisgender people, like these candidates, list their pronouns with the hope of normalizing the practice, allowing transgender and non-binary people to list pronouns without additional scrutiny.

“I think everyone should put their pronouns in their bio,” sophomore Avery\* said. “It’s not only normalizing, but it also makes things a lot easier. When your profile picture is not your face, I can’t really guess your gender.”

Some have also begun the practice of signing personal or work emails with pronouns. Kezia Gilyard, the LGBTQ+ Youth Coordinator for Broward County Public Schools, identifies as non-binary and signs their emails with their name and pronouns. The signature refers to them as “Mx. Kezia Gilyard, M.Ed.” (Mx. is a gender-neutral variant of Ms. and Mr.), and includes that their pronouns are “They, Them, Theirs.” They also include a link to an article explaining what they/them pronouns are and how they are used.

However, despite this wave of increased usage of pronouns, life for non-binary and transgender students still proves difficult.

According to a study conducted by GLSEN, roughly 3 in 4 transgender students reported feeling unsafe or harassed at school. These issues are echoed by individual students at Marjory Stoneman Douglas High School.

“I’m not entirely public with my identity,” Avery\* said. “It’s just that there’s so much confusion around it, and I think a lot of people ridicule it just because they don’t understand. I’ve had classmates talk about how stupid it is, or make jokes about identifying as inanimate objects. It puts me in a really uncomfortable and embarrassing place, and it makes it much harder to come out

when I’m worrying about whether or not I’ll even be taken seriously. I’ve never really told a teacher, out of the fear that I’d be treated as lesser for it.”

Broward County Public Schools currently has policies in place designed to protect trans and non-binary students from this kind of harassment. The BCPS Non-Discrimination Policy Statement 4001.1 states that “The School Board is committed to the provision of equal access... This policy is established to provide an environment free from discrimination and harassment based upon... gender expression, gender identity... sex or sexual orientation.” The language used is specifically chosen to include LGBTQ+ students. Despite this, transgender and non-binary students often experience backlash from both classmates and teachers.

Acceptance from teachers, in particular, is integral to transgender students feeling safe and supported in their learning environment. Transgender and non-binary youth are in a precarious position. Transgender youth have an extremely high suicide rate. According to a study by the American Academy of Pediatrics, 42% of non-binary youth, who fall under the umbrella of transgender youth, attempt suicide.

However, a different study by the same organization concluded that youth who transitioned into a supportive environment experienced better overall mental health and lower suicide rates.

Teachers often set the precedent for how students are treated by peers and thus can set the tone for whether or not an environment promotes acceptance of student identities. Pronoun usage can have a significant impact on whether or not a student feels accepted.

“When I first came out, I had this teacher who absolutely refused to call me

by they/them pronouns,” junior Caspen Becher said. “She’d frequently misgender me in front of other students, and call me by the wrong name. It was humiliating.”

Becher’s issues lie not only with teachers but with other students as well.

“I get a lot of looks whenever I go to the bathroom,” Becher said. “I’m called ‘it’ a lot. It’s very hard for me, feeling like I have to justify myself to everyone else for just existing. I just want to exist, and have people respect my identity as a baseline, but some kids, for whatever reason, just can’t.”

This issue is voiced by teachers as well.

“Unfortunately, I do see a lot of the non-binary students I come into contact with being sort of dismissed almost by a lot of people,” Jessica Marino, ESE support specialist and former Gender-Sexuality Alliance sponsor said. “Most of it is accidental misgendering—it takes time to get used to they/them pronouns—but sometimes, it isn’t unintentional. I’ve seen this a lot from students, mostly, but there have been one or two teachers who don’t take them seriously. Thankfully, most of the teachers at our school are very respectful and open-minded, but one bad apple can ruin the bunch.”

Ultimately, though, transgender and non-binary students are hopeful that things are getting better.

“You know, at the end of the day, it doesn’t hurt you to respect me. It doesn’t cost you anything to show a little bit of compassion for another person,” Avery\* said. “I think that it’s just a matter of time before people realize that non-binary people are just that: people. We come in all different shapes and sizes and look all sorts of ways, but we’re all still people.”

Story by Anna Bayuk and Marisol Martinez  
\*Names indicated have been changed to preserve the student’s privacy.

## TERMS TO KNOW

### transgender

An umbrella term for people whose gender identity differs from the sex they were assigned at birth.

### cisgender

A term used by some to describe people who are not transgender. “Cis-” is a Latin prefix meaning “on the same side as.”

### non-binary

Used by some people who experience their gender identity as falling outside the categories of man and woman.

### gender expression

External manifestations of gender, expressed through a person’s name, pronouns, clothing, haircut, behavior, voice, and/or body characteristics.

### gender identity

A person’s internal, deeply held sense of their gender.

### misgender

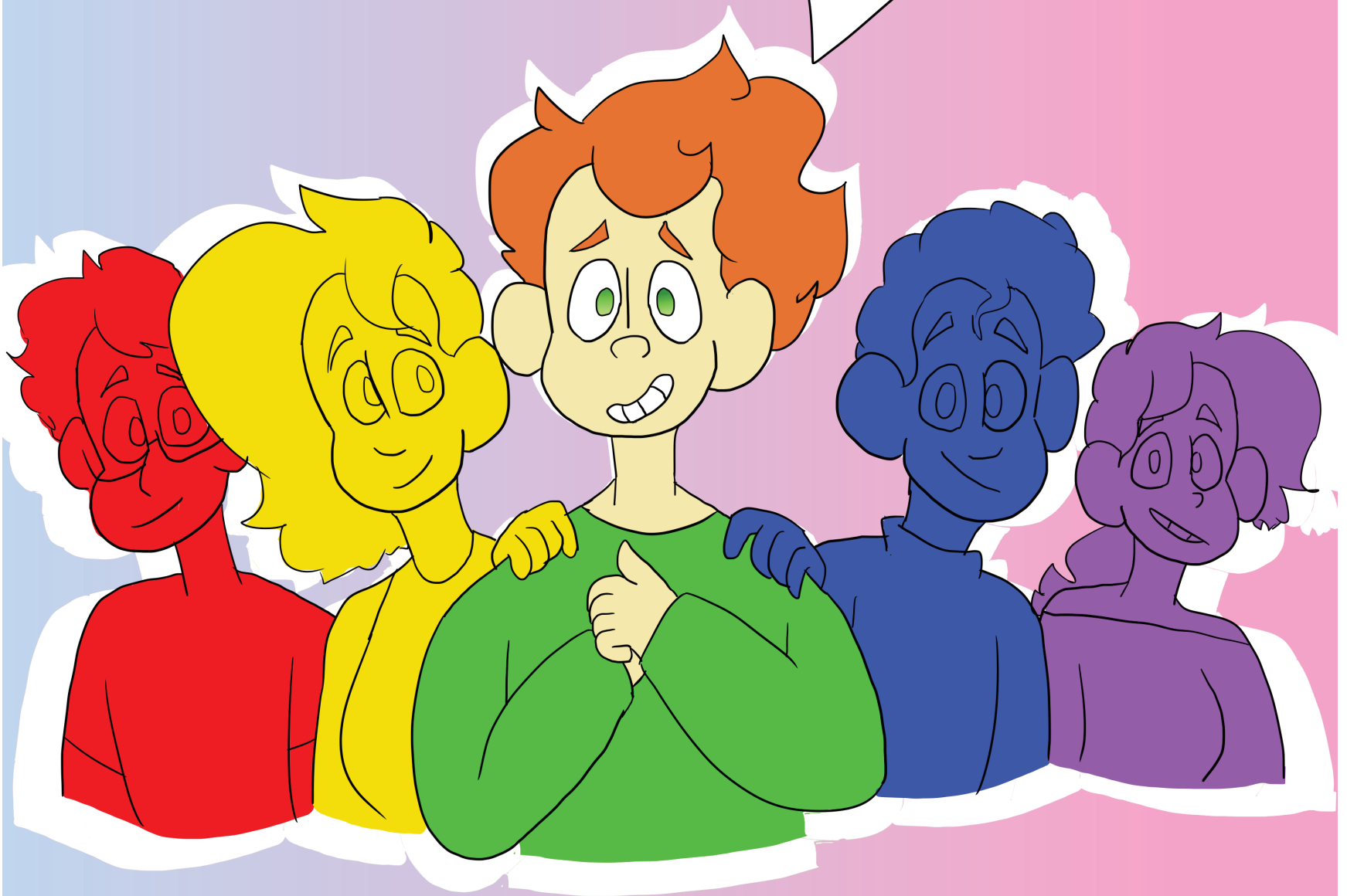
When someone uses the wrong pronoun or term to refer to a person, such as calling a transgender boy “her” or a transgender girl “him.”

“I’m called ‘it’ a lot. It’s very hard for me, feeling like I have to justify myself to everyone else for just existing. I just want to exist, and have people respect my identity as a baseline, but some kids, for whatever reason, just can’t.”

Caspen Becher, 11



They?





GET THE FACTS ABOUT DRUGS  
**JUST THINK TWICE**  
A Resource for Teens  
[www.justthinktwice.com](http://www.justthinktwice.com)



Taking care of your family—that's being good at life.

Contact me to learn more about securing your family's financial future.

**Tricia Click**  
Agent, New York Life Insurance Company  
1300 Concord Terrace, Suite 500  
Sunrise, FL 33323  
954-226-9343  
[tclick@ft.newyorklife.com](mailto:tclick@ft.newyorklife.com)  
[www.newyorklife.com/agent/tclick](http://www.newyorklife.com/agent/tclick)  
SMRU1710429 (Exp. 07/30/2020)  
© 2019 New York Life Insurance Company, 51 Madison Avenue, New York, NY 10010

Insure. Prepare. Retire.

Be good at life. 




**Tony Ryan**  
Realtor

---

954-240-0459  
[ryanmartony@gmail.com](mailto:ryanmartony@gmail.com)  
[tonyryan@Ryanmar.com](mailto:tonyryan@Ryanmar.com)  
Web: [Ryanmar.com](http://Ryanmar.com)

**RE/MAX ParkCreek Realty**  
5482 Wiles Rd. Ste. 502  
Coconut Creek, FL 33073

*Surgical Arts*



*of Boca Raton*

Jason E. Portnof, DMD, MD, FACS  
561-717-3660

Wisdom Teeth   Dental Implants   Bone Grafting  
TMJ Disorders   Orthognathic Surgery   Facial Trauma  
Facial Rejuvenation (Botox, Fillers)



## Coral Springs Location:

6250 Coral Ridge Dr. #190  
Coral Springs, FL 33076  
(954) 510-0600  
(954) 510-0602 (fax)  
[CS@ScoreAtTheTop.com](mailto:CS@ScoreAtTheTop.com)

# Score AtTheTop

LEARNING CENTERS AND SCHOOLS

[www.ScoreAtTheTop.com](http://www.ScoreAtTheTop.com)

- 🎯 Tutoring in All Subjects
- 🎯 SAT, ACT & FCAT Prep
- 🎯 Courses for Credit
- 🎯 Florida Virtual School Support
- 🎯 1-on1 Private School

Boca Raton ● Coral Springs ● Palm Beach Gardens ● Wellington ● West Palm Beach ● Weston

ACCREDITED BY THE SOUTHERN ASSOCIATION OF COLLEGES & SCHOOLS

Democratic candidates vie for the party's nomination

# CHOOSE YOUR CHALLENGER



## JOE BIDEN

### PAST CAREERS

Former U.S. Vice President  
Delaware Senator  
Ranking minority member of the  
U.S. Senate Judiciary Committee

### PLATFORMS

Climate Change  
College For All  
Promote Middle Class  
Affirmative Action

### SLOGANS

"Second to none"  
"Our best days  
still lie ahead"

### MSD STATS

**27.2%**  
of democrats at MSD  
prefer Biden as the  
democratic nominee

### MSD STATS

**22.2%**  
of students at MSD  
want Sanders to be the  
democratic nominee

### SLOGANS

"Not me, us"  
"Working class  
Candidate"

### PLATFORMS

Medicare-For-All  
College For All  
Green New Deal  
Workplace Democracy

### PAST CAREERS

Vermont Senator  
Former Vermont Representative  
to the House  
Former mayor of Burlington

## BERNIE SANDERS



## ELIZABETH WARREN

### PAST CAREERS

Massachusetts Senator  
Special assistant to Barack  
Obama for the Consumer  
Protection Financial Bureau

### PLATFORMS

Medicare-For-All  
Criminal Justice Reform  
College For All  
Rebuild Middle Class

### SLOGANS

"Persist"  
"Dream Big,  
Fight Hard"

### MSD STATS

**19.4%**  
of independents at MSD  
want Warren as the  
democratic nominee

### MSD STATS

**13.9%**  
of democrats at MSD  
want Buttigieg to be the  
democratic nominee

### SLOGANS

"It's time for a  
new generation  
of American  
leadership"

### PLATFORMS

Criminal Justice Reform  
Firearm Reform  
Medicare for Those  
Who Want It

### PAST CAREERS

Mayor of South Bend, Indiana  
Combat Veteran  
Fellow for the Truman National  
Security Project

## PETE BUTTIGIEG



## ANDREW YANG

### PAST CAREERS

Entrepreneur of Venture for  
America  
Corporate attorney in New  
York City

### PLATFORMS

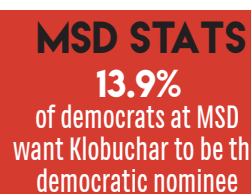
Universal Basic Income  
Human-centered capitalism  
Partisan gerrymandering  
Eliminate Electoral College

### SLOGANS

"Humanity first"  
"Not left, not  
right, forward"

### MSD STATS

**20.5%**  
of republicans at MSD  
prefer Yang as the  
democratic nominee



### SLOGANS

"Let's get to  
work"

### PLATFORMS

Health Care  
Corporate Power  
Criminal Justice Reform  
Eliminate Electoral College

### PAST CAREERS

Minnesota Senator  
Hennepin County Attorney  
Corporate Attorney in  
Minnesota

## AMY KLOBUCHAR



## CORY BOOKER

### PAST CAREERS

New Jersey Senator  
Former Newark mayor  
Former Newark city  
councilman

### PLATFORMS

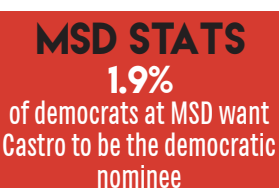
Equal access to healthcare  
Common sense gun reform  
Minority equality  
Nuclear Power

### SLOGANS

"Together,  
America, we will  
rise"

### MSD STATS

**4.4%**  
of students at MSD prefer  
Booker as the democratic  
nominee



### SLOGANS

"One nation,  
one destiny"

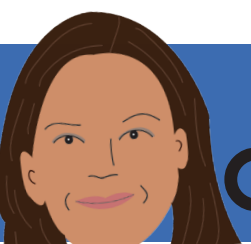
### PLATFORMS

Disarming Hate  
Criminal Justice Reform  
Climate Change  
Raise taxes on the wealthy

### PAST CAREERS

Former Secretary of Housing  
and Urban Development  
Former mayor of San Antonio,  
Texas

## JULIAN CASTRO



## TULSI GABBARD

### PAST CAREERS

Hawaii  
Representative to the  
House  
Combat Veteran

### PLATFORMS

Anti-interventionism  
Criminal Justice Reform  
College For All  
Universal Background Checks

### SLOGANS

"Lead with  
Love"

### MSD STATS

**1.8%**  
of students at MSD prefer  
Gabbard as the democratic  
nominee

Results based on a poll of 340 MSD students



## SLB INSURANCE GROUP

5900 Hiatus Rd  
Ft. Lauderdale, FL 33321  
www.slbgroup.com

Direct: (954) 724-7014

## SCHOOL of ROCK Coral Springs

CORALSPRINGS.SCHOOLOFROCK.COM | 954.757.ROCK

Music Lessons.  
Done  
*DIFFERENTLY!*



Service • Monitoring • Inspections • Installations

Fire Alarm  
Fire Sprinkler  
Building Entry Systems  
Access Control  
Camera Systems



954.785.7800 • www.bassunited.com

State Electrical EF0000084  
State Fire Sprinkler FPC15-000078

## REDGRAVE & ROSENTHAL ATTORNEYS AT LAW

*Alan B Rosenthal*  
Mizner Park Office Tower  
225 N.E. Mizner Boulevard, Suite 440  
Boca Raton, Florida 33432  
Main 561.347.1700  
Fax 561.391.9944  
arosenenthal@redgraveandrosenthal.com  
www.redgraveandrosenthal.com

# unique apparel

CLOTHING STYLES THAT BEST FLATTER YOUR INDIVIDUAL  
BODY SHAPE AND SENSE OF STYLE. SMALL TO 3X!

VISIT US ONLINE VIA: [WWW.VILMASBOUTIQUE.COM](http://WWW.VILMASBOUTIQUE.COM)

## FLORIDA CAR BROKERS

Financing Available  
Good-Average-Poor Credit-First Time Buyers

Gary: 954.778.8063  
Tim: 954.760.8288  
Fax: 954.507.4270

Trade-Ins are Welcome  
[www.FloridaCarBrokers.com](http://www.FloridaCarBrokers.com)  
[FloridaCarBrokers@gmail.com](mailto:FloridaCarBrokers@gmail.com)



# Listopad & Finder, DDS, PA

## CORAL SPRINGS FAMILY DENTISTRY

[www.LFdental.com](http://www.LFdental.com)

# 954-752-2970

## 10161 W. Sample Road

### PROUD SUPPORTER OF MSD HIGH SCHOOL



# GLOBAL WARNING

12 HAVOC IN  
OUR HABITAT

17 MEET THE  
INVADERS

18 CLIMATE IN  
CRISIS

20 MEAN, GREEN,  
CARBON MACHINE

23 REDUCING YOUR  
CARBON FOOTPRINT

25 REDUCE, REUSE,  
RECYCLE

27 LOCALS  
ONLY

29 SUSTAINABLE  
STARTUP

30 THERE IS NO  
PLANET B

31 LET'S MAKE  
A DEAL

31 ONE STEP  
AT A TIME

33 FUN IN  
THE SUN





# HAVOC IN OUR HABITAT

South Florida faces a variety of environmental issues and is working towards finding solutions for the future

**A**t a glance, South Florida may simply appear to be home to crystal blue beaches, beautiful homes and a multitude of unique wildlife. However, dig a little deeper and one will find toxic algal blooms that threaten the lives of both plants and animals, rising sea levels that have the potential to flood local communities, invasive species who intimidate native wildlife and a continuous urban development, resulting in a loss of habitat for numerous species.

## Bloom and Bust

Algae are aquatic plants that make up a vital part of Florida's ecosystem. They are foundational in the aquatic food chain and provide people with oxygen to breathe. However, when an algae population rapidly increases in a body of water, also known as an algal bloom, the once ecologically beneficial aspects of algae turn harmful.

Algal blooms can arise from a variety of factors, including warmer temperatures, increased light intensity, stable water conditions with low flows and high turbidity in the water column. However, increased nutrient levels greatly exacerbate the process of simple algae morphing into a dangerous algal bloom. When an excess of nutrients—

particularly phosphorus and nitrogen—enter a waterway, algae absorbs the nutrients, resulting in them growing and dividing quickly and creating an imbalance in the aquatic habitat.

The overproduction of algae that coats the surface of a body of water has many negative consequences. Besides creating a thick layer of discolored scum and having the potential to be toxic to humans and aquatic animals, one of the most prominent concerns is an algal bloom's ability to form dead zones.

According to the United States Environmental Protection Agency, a dead zone can occur when "the overgrowth of algae consumes oxygen and blocks sunlight from underwater plants. When the algae eventually dies, the oxygen in the water is consumed [during decomposition]. The lack of oxygen makes it impossible for aquatic life to survive."

One of the most well known dead zones in the U.S. is the Gulf of Mexico dead zone, which forms each spring, when nutrient-rich runoff flows down from the Mississippi River. However, numerous similar algal blooms are found throughout the state of Florida.

According to the Florida Sea Grant, a university-based program that promotes conservation through research and education, massive algal blooms have been seen in the St. Lucie Estuary, Lake Okeechobee and Biscayne Bay, among many other locations. Some of these blooms are referred to as "red tides" when *K. brevis*, a specific type of algae, accumulates.

Red tides are particularly harmful because they

produce toxins, which can kill aquatic animals and marine birds. Also, due to their neurotoxic brevetoxins, red tides serve as a public health risk because they can cause irritation to residents in coastal areas and serious illness to those who already suffer from chronic respiratory issues. Some students at Marjory Stoneman Douglas High School have seen the effects of red tide first-hand.

"One [thing that] definitely kept me from surfing was red tide," senior Rachel Catania said. "The upwelling of aquatic microorganisms makes it really hard to spend time in the ocean. I remember one day I was really excited to go surfing because of the huge surf that was out, but the moment I arrived at the beach, my surf coach made me turn around and go home. It was very windy that day, and red tide can be very harmful if it gets in your eyes. It also kills a ton of wildlife [and] a ton were washed up on shore. No matter how good the surf, it was simply not safe."

Additionally, all kinds of algal blooms have economic drawbacks in sectors such as tourism, fisheries, recreation and management. Due to these algal blooms, Florida's active tourism is expected to face some harsh losses. For example, red tides alone are "estimated to cause more than \$20 million in tourism-related losses in Florida each year," according to the Florida Sea Grant.

"We are fighting to make sure that the environment is a priority in everything that we do," Broward County Commissioner Michael Udine said. "A lot of what we do in South Florida revolves around tourism; tourists are coming down, and they want clean beaches."





**Seas of Green.** Algae in the Caloosahatchee River beside the W.P. Franklin Lock and Dam in Alva, Florida, July 11, 2018. Environmental worry that legislation being pushed by Florida Senate President Bill Galvano to build three new toll roads will lead to suburban sprawl that exacerbates Florida's water quality problems. *Photo courtesy of Greg Lovett/The Palm Beach Post/ TNS*



**No Good Green.** Boats docked at Central Marine in Stuart, Florida are surrounded by blue-green algae in June 29, 2016. When the blooms begin to die and disintegrate, the pigment may color the water a distinctive bluish color, hence the name Blue-green algae. *Photo courtesy of Greg Lovett/The Palm Beach Post/TNS*

**Hazardous High Tide.** Seasonal high tides, called king tides, flooded coastal neighborhoods in Hollywood, Florida in September 2019. The worsening king tides show how sea level rise will eventually affect coastal South Florida. *Photo courtesy of Taimy Alvarez/Sun Sentinel/TNS*



The costs of clean-up are expensive as well, with \$17.3 million being spent in 2018 to alleviate issues caused by algal blooms. Although algal blooms often occur naturally, humans can prevent an increased outbreak of them by reducing our activities which lead to a warmer climate and warmer waters, and by preventing nutrient-rich runoff by using more sustainable methods of agriculture.

## Rising Tide

According to Sea Level Rise.Org, an organization dedicated to implementing solutions to combat sea level rise, Florida's sea level "is up to eight inches higher than it was in 1950." Due to the effects of increased global temperatures, more land ice is melting into the oceans, and the thermal expansion of water is occurring. The results of this phenomenon can be dangerous, as floods can interrupt daily life and saltwater intrusion can contaminate the freshwater supply.

"The overriding theme is sea level rise," Udine said. "We are seeing more and more flooding throughout low line levels throughout the county. Couple that with the king tides that we have seen over the last few years and I think that sea level rise and flooding is becoming a big issue."

Both ice melting and a slowing gulf stream contribute to sea level rise, especially during the fall season, when the gravitational pull enables water to move inland and the Gulf Stream becomes slower. During this season, South Florida experiences king tides, which can be about a foot

taller than normal tides.

A well understood effect of sea level rise is flooding, which has both positive and negative consequences. While floods can enrich soils and promote healthy wetlands, excessive flooding can "cause destructive erosion, wetland flooding, aquifer and agricultural soil contamination with salt, and lost habitat for fish, birds, and plants," according to National Geographic. Flood water can also invade low-lying roads and add pressure to local sewer systems, which can have costly and potentially hazardous outcomes.

Additionally, an increasing sea level rise, coupled with drought and excessive groundwater pumping, can induce saltwater intrusion in underground aquifers, which can lead to the contamination of fresh drinking water sources. This is especially alarming in Florida, where underground aquifers supply approximately 90% of drinking water needs. However, this saltwater intrusion not only affects humans, but also local plants and animals.

"As we've reduced the freshwater delivery down to the coastal environments as a result of flood control, we've exacerbated the inland movement of salt water into the Everglades," Associate Professor at the Southeast Environmental Research Center and the Department of Biological Sciences at Florida International University Tiffany Troxler said. "Some of our research is illustrating that in marshes that were previously fresh waters and not exposed to salt water conditions and because those plants are not adapted to a rapid increase in salt water concentrations, their growth can reduce.

The growth of the plants is what forms the soils on which they persist, and so if the growth of the plants reduce, then their ability to produce the soils that they're on also declines. We also call that peat collapse."

Unfortunately, in South Florida, preventing the effects of an increasing sea level is not a simple task. The porous limestone Floridians live on is not an ideal foundation for preventing sea level rise and saltwater intrusion, as the bedrock can permit the saltwater to seep through the holes. In order to keep up with the increase in sea level rise, sea walls must also increase in height. Locally, Fort Lauderdale has implemented a \$1 billion stormwater plan and Broward County has created a \$250 million plan to protect sewage systems from flooding.

"We are talking about in different cities trying to raise sea level walls to make sure that they can hold some of the water out," Udine said. "We are trying to build a more sustainable infrastructure as we go forward with different projects and recognizing the fact that sea level rise is a real issue and planning for it accordingly. Everything that we are doing on the county commission, we are trying to do with an eye towards the environment. Even our fleet, we are trying to convert over to an electric fleet to do what we can to combat the global warming that's leading towards sea level rise."

However, sea level rise is not just a local problem. In just the last 20 years, there has been a 233% increase on average in tidal flooding across the nation, according to Sea Level Rise.Org.



However, many scientists believe that although the sea level is increasing, it is not too late to alleviate some of the prevalent issues that persist, by focusing on both short and long term solutions.

“There are two aspects of addressing sea level rise. There’s mitigation, which is to reduce the carbon dioxide going into the atmosphere, so that we can lessen the long term interchange in sea level, and then there’s the adaptation, which is things that you do in our environment right now,” Troxler said. “We want to be very intentional about what we expect the outcome of the changes to be, so that’s why we try to bring together faculty and external community partners from engineers, economists, ecologists, social scientists, people that study public health, people that study law, to try to understand what sort of outcomes we can help to design with different types of information. And so if you take a sort of a holistic view toward trying to integrate different types of information to get a broader picture of what the outcomes could be, then you can avoid unintended consequences.”

## Ecosystem Invaders

The National Oceanic and Atmospheric Administration defines invasive species as “animals or plants from another region of the world that don’t belong in their new environment.” Although they may just seem like friendly visitors, they have tremendous potential to threaten biodiversity, push native species towards extinction and dramatically change the outlook of a habitat.

The Burmese python, which originates from South and Southeast Asia, is one of the most well-known and threatening invasive species found in the Florida Everglades. During the 1980s, the pythons were likely introduced to Florida in the exotic pet trade and then released into the wild by irresponsible pet owners.

“Obviously, Burmese pythons are in the news a lot because they’re big scary snakes, and they have contributed to the decline of the rodent population in the Everglades by a significant amount,” AP Environmental Science teacher Tammy Orilio said. “That’s having a huge impact on biodiversity in Florida.”

The Burmese python has already done great damage to the biodiversity found within the Everglades. According to a 2012 study conducted by Michael Dorcas of Davidson College and John “J.D.” Willson of Virginia Tech’s College of Natural Resources and Environment, in the southernmost regions of the Everglades, populations of raccoons dropped 99.3 percent, opossums 98.9 percent, and bobcats 87.5 percent, while foxes, cottontail and

marsh rabbits were not found in observance.

“When you have the sort of the overarching impact of climate change, the natural organisms are going to be susceptible to changes in temperature,” Troxler said. “And when they also are being affected by other species that are introduced to their food webs, like top level predators that are fighting it out with them, that has a big impact on the food chain.”

Additional invasive species include feral swine hogs, who induce significant crop losses due to their plentiful eating habits; lionfish, who threaten the health of coral reefs by decimating reef fish; bullseye snakehead, which feed on a wide variety of prey; and Old World climbing fern infests new habitats and dominates native vegetation. Florida contends with more than 500 other non-native species.

“South Florida has a large number of invasive species,” Orilio said. “Lionfish in our oceans are causing problems because they’re eating a lot of the small reef fish, and the small reef fish keep algae in check,” Orilio said. “And so now the algae is growing on top of coral reefs, killing the coral and infecting the other surrounding corals.”

Unfortunately, getting rid of invasive species is not a simple task either, as species often reproduce and spread rapidly. Due to this, attempting to get rid of invasive species is pricey and labor intensive.

According to a fact sheet from the U.S. Fish and Wildlife Service, a 2005 study reported that invasive species cost the U.S. over \$120 billion annually, and in 2011, the Fish and Wildlife Service spent more than \$100 million to control invasives.

Additionally, eradication efforts targeting specific populations are not completely guaranteed, as sometimes proposed solutions have negative effects. For example, take the small Indian mongoose arising from South and Southeast Asia, which was brought to the New World by sailors who intended to control invasive snake and rodent populations during the colonization age. However, due to the mongoose’s plentiful eating habits, it did more damage than good, as it is blamed for leading to the extinction of nearly 12 species throughout the world.

In Florida, more efforts are being implemented to control invasives. On Aug. 7, Gov. Ron DeSantis announced his plan to direct the Florida Fish and Wildlife Conservation Commission and the South Florida Water Management District to increase collaboration in research, training programs, education campaigns and incentives for veterans to capture Burmese pythons. Already through this program, more than 3,600 pythons have been removed from the Everglades.

On a more local scale, Broward County is

helping to make an effort in controlling non-native species.

“Some of the municipalities have done it, and there’s been things where we’ve gone in and cleaned up parks in the county that had invasive species,” Udine said. “It’s very labor and cost intensive, and you need to go in and make sure that you do it right so that the invasives don’t come back, but it’s important for the ecological infrastructure of the community to make sure that we are dealing properly with those species.”

In attempts to alleviate some of the issues invasives cause, some students at MSD see the value of killing invasive species in their free time, for the sake of personal benefit and environmental protection.

“I learned about it through my dad. He’s killed invasives for all of his life, and I grew up in Florida so I decided to do that as well,” senior Ryan Palen said. “I kill snakeheads mostly, and I have killed Burmese pythons. I kill these invasive species to protect what I enjoy doing, which is fishing. Instead of going fishing for let’s say largemouth bass, you’d just catch snakeheads because they killed all of the bass.”

Although invasive species are dangerous and plentiful, especially in the South Florida region, statewide, local and individualized initiatives are taking place to help combat negative consequences.

## Build it up, Break it Down

If one takes a drive throughout South Florida, they will certainly observe new construction. Whether it be homes, schools or new shopping centers, South Florida appears to be changing into a more urban landscape, driven by the increasing population. Unfortunately, as an area becomes urbanized, it can have significant blows to the environment.

According to a 2005 study conducted by Stanley K. Smith of the University of Florida entitled, “Florida Population Growth: Past, Present and Future,” since the 1900s, South Florida has seen tremendous growth in their population. It states, “Fueled by agricultural and industrial growth, tourism, retiree migration, and an expanding transportation system, populations of central and south Florida mushroomed... Between 1900 and 1980, growth rates averaged 90% per decade in the Southeast, 66% in the Southwest, 52% in the Central region and only 24% in the North.”

If these population trends continue, Florida’s population is predicted to increase to nearly 26 million by 2030, according to the Florida Chamber of Commerce. When there’s population growth and

**Preserving the Peace.** Florida Gov. Ron DeSantis poses for photos with a python, along with representatives from state environmental agencies, biologists and environmental advocates, after a news conference to announce the doubling of efforts to hunt down pythons in remote areas of Big Cypress National Preserve on Wednesday, Aug. 7, 2019. *Photo courtesy of Taimy Alvarez/Sun Sentinel/TNS*

**Taking the Headcount.** Bullseye Snakeheads are weighed out and counted by Kelly Gestring of the Florida Fish and Wildlife during an April 21, 2012, tournament in Margate, Florida. Snakehead can walk over land and eat bass, turtles and even iguanas. *Photo courtesy of Mike Stocker/Sun Sentinel/TNS*

**Caught in the Act.** Conservation biologist Joseph A. Wasilewski holds male (top) and a female (bottom) green iguanas that he recently trapped on Dec. 12, 2017 in Miami, Florida. *Photo courtesy by Jose A. Iglesias/el Nuevo Herald/TNS*







more densely populated cities, it has significant effects on biodiversity.

Oftentimes new development invades pristine wetlands, which leads to habitat fragmentation and the loss of habitat for both plant and animal species. For example, the manatee and the Florida panther were added to the endangered species list during times of rapid population growth, in the late 1960s and early 1970s.

“Habitat fragmentation [occurs] as we are building more and more roads, diverting water flow from the Everglades out into Florida Bay by diverting that towards the coastlines, which are not natural and having huge impacts in Florida Bay. Obviously, with urban development, [comes] the destruction of natural habitat and pollution,” Orilio said.

However, the layout of the landscape is being affected as well. Due to the urban and agricultural development that has occurred for over a century in Florida, wetlands, such as the Everglades, have been reduced to half their size and nutrient pollution has become rampant.

Interest in draining the Everglades for agriculture and urban development began as early as 1881, a process that continued in various stages until 1954 when the C-38, a 100-mile long levee, was built between the eastern Everglades and the suburbs from Palm Beach south to Homestead. The levee, which runs along the eastern edge of the Everglades and the western edge of both Parkland and Coral Springs, blocks the flow of water into the populated areas.

In 1948, Congress authorized the Central and South Florida Project, which essentially assigned the Army Corps of Engineers to drain the Everglades. The project entailed constructing new roads, levees, canals and water-control structures for the purpose of urban and agricultural development. While the project was successful in carrying out its intended purpose, it has significantly degraded the health of the Everglades.

According to the Everglades Foundation, “1,800 miles of canals and dams currently break up the natural system, with water control points and pump stations diverting the natural flow of water

to coastal towns and cities. Water must be released to estuaries to prevent flooding and Florida finds itself in a situation where there is often too much water in the wet years, and not enough in the dry ones.”

Around the Everglades, urban development has created shopping centers, houses and schools, including Marjory Stoneman Douglas High School. Cities like Parkland and Coral Springs and others that reside along the C-38 levee owe their existence to over 100 years of efforts to drain the Everglades. Many students at MSD find attending a school named after an Everglades conservationist ironic, due to the notion that it contributes to the negative effects of urban development.

“We preach about how we want the Everglades to be restored, and Marjory Stoneman Douglas was a major influence on the project of restoration, yet we built the school in spite of that,” junior Nicole Alexiou said.

Additionally, urban development creates more impervious surfaces, leading to flooding, runoff and pollution.

“When you have more impervious surface and you have more of surface water runoff that goes into storm drains, less of that is being infiltrated into the land,” Troxler said. “Storm water essentially picks up whatever contaminants might be on the street or on a sidewalk and goes out to our near shore water bodies. It has sort of a direct path to open water bodies, which are quite sensitive to nutrient and carbon pollution.”

Although the population in South Florida is predicted to increase and new development is expected to occur, local counties are becoming more conscious of their actions. Recently, they have been focused on runoff and transportation issues in terms of urban development.

“We’re changing the way we think about development so that we are friendlier and more resilient to the environment,” Miami Beach Mayor Dan Gelber said. “So for instance, we are creating areas that absorb water; we are trying to moderate our intensity of use in certain areas because of transportation challenges; and we’re trying to make sure that our communities are walkable or

**Dangerous Development.** A developer wants to erect a pair of six-story apartment buildings at the end of Loxahatchee Road, in Parkland, overlooking the Everglades. The developer says he needs the high density because the county took part of his land to build a radio tower, which he says will hurt how much people are willing to pay to live there. *Photo courtesy of Greg Lovett/The Palm Beach Post/TNS*

bicycleable and not necessarily requiring people to use cars all of the time. The counties in South Florida have created a whole group that works together to share best practices to environmental challenges.”

Jennifer Jurado, the Chief Resilience Officer of Broward County, is also focused on individualized goals relating to transportation. When there is a higher population, more vehicles are added into the area, which contributes to greenhouse gas emissions being released into Earth’s atmosphere.

“The longer term plan is aiding people to get out of single passenger occupant vehicles so that we can get more people into transit,” Jurado said. “Also to support development where you don’t necessarily need a vehicle to get to work because ideally, you’re able to live and work in the same geographic area and supporting alternative modes of transportation such as bicycling and shared vehicle programs.”

Although South Florida is expected to increase their participation in the urban development process and thus exacerbate issues such as habitat fragmentation, nutrient pollution and flooding, local counties are working together to find more eco-friendly ways to urbanize.

In essence, the numerous environmental issues prominent in South Florida tie into one another and create additional problems in the sectors of economy, biodiversity and public health. These problems have the potential to get worse over time, but local counties and the Florida state government are hoping to alleviate some of the effects by implementing new sustainable policies and planning for the future. *Story by Zoe Gordon*





Since 1980

**24-HOUR EMERGENCY SAME DAY SERVICE**

**PLUMBING EMERGENCY?  
DEPEND ON US!**



**\$50 OFF**

Clearing of Any  
Sink, Toilet or  
Sewer Drain

**\$45 OFF**

Any Toilet  
Repair

**\$85 OFF**

Any Rheem  
Water Heater  
Installation

**\$40 OFF**

Any Garbage  
Disposal  
Installation

**COMPLETE  
PLUMBING  
Service & Repairs**

Sewer & Drain Cleaning • Toilets • Water Filters  
Pipe Repair & Replacements • Faucets & Sinks  
Water Heaters • Disposals • Shower Pans

**WATER  
HEATERS  
STARTING AT  
\$12\*  
PER MON.**

**100% FINANCING  
ON RHEEM WATER HEATERS\***



**PRO**  
PARTNER

**18 MONTHS  
SAME  
AS CASH**

All discounts taken off the regular rate of work. Coupons and other specials cannot be combined. Must mention this ad at time of service.

*\*If qualified for financing*



ACCREDITED  
BUSINESS



**WEST END PLUMBING** **954-741-5271**  
**WestEndPlumbing.com**

**STATE LICENSED & INSURED • CFC1427334**



# MEET THE INVADERS

Non-native species continue to negatively impact Florida



## GIANT AFRICAN LAND SNAILS

**A***chatina fulica*, better known as the giant African land snail, is an invasive species that originated from East Africa and first invaded South Florida in the 1960s when they were brought as pets and educational props. They are extremely harmful to Florida because they can consume at least 500 different types of plants and cause damage to plaster and stucco structures, such as houses and walls, leading to harm in tropical and subtropical environments. Additionally, they carry a parasite, called rat lungworm, which is believed to cause a form of meningitis to humans.



## FERAL CATS

**F***elis catus* is better known as the domestic house cat. Feral cats are normal domestic, house cats; however, once they are left without human contact and a home, they become feral. There are approximately 6.3 million to 9.6 million feral cats in Florida alone. Cats are believed to originate from Egypt, specifically in the Fertile Crescent during the Near East Neolithic period and the Classical period. Feral cats are a danger to Florida due to the diseases and parasites that they carry, which can infiltrate reservoirs. Feral cats kill approximately 271 million small mammals and 68 million birds annually in the state of Florida, and many of these prey are endangered and threatened species.



## LIONFISH

**P***terois volitan*, better known as the lionfish, is an invasive species that has had a negative effect on native species and habitats in Florida. Lionfish are believed to have invaded Florida via the warm and rapid Gulf Stream, which may have possibly transported lionfish eggs and larvae towards Florida in the waters. Due to their lack of predators, great feeding capacity and high rate of reproduction, lionfish damage coral reefs, seagrasses and mangroves among many other marine organisms. As lionfish prey on native reef fish and shellfish, a decrease in growth and survival of native predators takes place.

## ASIAN GREEN MUSSELS

**P***erna viridis*, better known as the Asian green mussel, is native to the waters of the Indo-Pacific region from India to Southeast Asia and was first observed in the Tampa Bay area in 1999. They are a danger to Florida because they often weigh down navigation buoys, damage the hulls and engines of boats and can clog seawater intakes, all of which can be costly. Additionally, green mussels have increased the frequency that boats require hull cleanings in Florida and can overall negatively impact Florida's economy.



## WILD HOGS

**S***us scrofa*, better known as the wild hog, is an invasive species that originated in Europe, Africa and Asia. Additionally, it is believed that they were first introduced to Florida by early settlers in the 1500s. Wild hogs negatively impact the environment because they carry numerous diseases and parasites, which may harm wildlife native to Florida, livestock and people. Rooting, the process of digging in search of food, which then leads to the uprooting of turf and soil, is caused by wild hogs and can lead to many harmful effects such as the destruction of native species, erosion and water quality problems.



## CUBAN TREEFROG

**O***steopilus septentrionalis*, better known as the Cuban treefrog, is an invasive species that originated from Cuba and was accidentally brought over to Florida in the 1920s as hitchhikers on ships. They negatively impact Florida's environment by harming the native ecosystem and causing short circuits in transformers and electrical switches. Additionally, they grow very large and compete for food and resources with native species.



## BURMESE PYTHONS

**P***ython bivittatus*, better known as the Burmese python, is an invasive species that disrupts the ecosystem by preying on Florida's native animals, such as alligators and deer. Burmese pythons originated from Southeast Asia and were first introduced to Florida in the 1980s, as a result of irresponsible pet owners releasing them into the wild. Pythons are classified as constrictors, so they use their teeth and wrap themselves around their prey's body to suffocate and kill them. Burmese pythons eat everything in sight, and have consumed 99% of the rodent population in the Everglades. In addition to disrupting the ecosystem, they also distort the physical nature of the environment and outcompete native species for food and resources.

## BRAZILIAN PEPPERTREE

**S***chinus terebinthifolius*, better known as the Brazilian peppertree, was brought to Florida in the 1800s from Argentina, Brazil and Paraguay to be used as an ornamental plant. They harm Florida by forming a dense forest that produces a large, closed canopy, which blocks other organisms from receiving the sunlight necessary for photosynthesis.



## CANE TOADS

**R***hinella marina*, better known as the cane toad or bufo toad, is an invasive species that originated from South and Central America. It was first introduced to Florida in the 1930s in hopes that they would control agricultural pests in sugar cane fields. They are toxic at all stages of their life cycle and are a threat to biodiversity due to their high reproductive rate, large number of offspring and poisonous exterior, which decreases the amount of food and kills Florida's native species.



## GREEN IGUANAS

**I***guana iguana*, better known as the green iguana, is native to Central and South America. The green iguanas were first spotted in Florida along the Miami Dade County Southeastern Coast in the 1960s. The green iguana digs burrows to live in, which erode and collapse soil and infrastructures such as buildings. The Florida Fish and Wildlife Conservation Commission urges all homeowners in South Florida to kill any iguanas on their property, due to the damage they can cause to pavements and foundations.



## ARGENTINE TEGUS

**S***alvator merianae*, better known as Argentine white and black tegu are a species of lizard believed to have been brought to Florida from South and Central America by pet owners and set free into the wild. The lizards then began to reproduce rapidly and produce large numbers of offspring. Tegus are extremely harmful to Florida because of their diet of eggs, specifically alligator, crocodile and tortoise eggs. The consumption of the reptile eggs threatens the overall biodiversity of the reptiles' habitats as it is decreasing their offspring.



**Searching for Change.** Cypress Bay High School student activist Martina Velásquez and Broward County Human Relations Committee representative Elijah Manley oversee the Fort Lauderdale climate change protest, which they organized. *Photo by Darian Williams*



**Call for Action.** Environmental protester Timothy LaRoque advocates for climate action in Fort Lauderdale, Florida. *Photo by Darian Williams*

**Passionate People.** Local climate activists rally in front of the Broward County School Board Building on Friday, Sept. 20. *Photo by Darian Williams*

**Hitting the Streets.** Protestors from all over Broward County came in support of the climate movement on Friday, Sept. 20. *Photo by Darian Williams*



## GETTING INVOLVED

National and local organizations offer opportunities for people to take action on environmental issues



350.org focuses on the use of fossil fuels through petitions, protests and instituting renewable resources. The name is derived from 350 parts per million, which is the safe concentration of carbon dioxide. Recently, they have worked with the youth movement "Fridays for Future." Donations can be made to 1-646-801-0759 or <https://350.org/other-ways-to-give/>



Ecosia is a search engine founded in 2009 by Christian Kroll. It can be easily downloaded from their website. The company works by planting a tree in one of 15 countries for every 45 searches. Locals are employed to plant the trees so it benefits the community and the environment.



By 2021, the Sunrise Movement plans on "engaging in mass noncooperation to interrupt business as usual and win a Green New Deal," using the power of youth and community activism. Local hubs can be found in different towns, cities and schools across the country. The Sunrise Movement can be contacted at [team@sunrisemovement.org](mailto:team@sunrisemovement.org).



# CLIMATE IN CRISIS

National climate movement partners with local activists to organize rallies supporting their cause

Climate change activists in Florida organized protests in a multitude of locations varying from the Florida capitol building in Tallahassee to the Broward County Public School Board building in Fort Lauderdale in order to call for affirmative climate change action on Friday, Sept. 20.

The Fort Lauderdale protest consisted mostly of student activists that missed school in order to attend the strike and are adamant about making a change to protect the environment.

In attendance at the rally was Marjory Stoneman Douglas High School sophomore, Faith Hartwig.

Hartwig, also a member of the newly revamped 'Save What's Left' club at MSD, came out to the protests to support her best friend, one of the coordinators of the Broward rally. Hartwig also attended the protest to ensure that her voice, along with those who are concerned about the environment continue to be heard.

"I wanted to support my best friend Martina and the cause because I think we need climate action immediately," Hartwig said. "I started getting involved my freshman year after I realized how bad the environment was getting. Martina shed some light on the issue towards me and she was very passionate about it, which inspired me. I really wanted to be that committed too and show others how you can make a change if you care about it enough."

For many of these student activists, the strike was only the beginning. Many shared their future plans and hopes

regarding their involvement in the national climate movement.

"I really hope that we let politicians know that this is an issue that we truly care about. They're starting to see that young people truly are going to come out to vote and if we can make this one of our voting issues, politicians would do it in order to get us to come out and support them," local protester and North Broward Preparatory School student Jordan Schiff said.

These Florida protests were simply a subsidiary of the current global climate change movement.

Climate change has been a controversial topic since the discovery of its effect on the environment. Subsequently, the national movement against climate change was founded in 2014, sparking the interest of thousands of newfound environmentalists. The primary organization within this movement is the People's Climate Movement, which fights for environmentally-friendly changes through protests and petitions.

The People's Climate Movement consists of various groups, such as the Climate Group and the Sierra Club, which advocate for political action. These groups are heavily focused on gaining support for the Green New Deal, a proposed resolution addressing climate change and other environmental issues.

According to the People's Climate Movement mission statement on their website, "the momentum around the Green New Deal is no joke — it's clear that there's a huge appetite in our country for

comprehensive solutions to address the climate crisis, presenting the opportunity for bold and concrete legislation on climate change, jobs, racial justice, and economic justice."

In 2018, Swedish 15-year-old, Greta Thunberg, launched the "Fridays for Future" movement, where she encouraged the youth to skip school on Fridays and rally for their governments to make a change regarding climate change.

"For well over a year, young people from all around the world have been striking from school every Friday demanding world leaders to take responsibility and to unite behind the science," Thunberg said in an interview with Newsweek on Nov. 8. "They have not done that. The people in power continue to ignore us and to ignore the current best available science."

Since then, Thunberg has partnered

with a major climate change organization, 350.org, to continue these Friday protests all over the world.

With the cooperation of 820 organizations, 350.org also conducted an international protest, called the Global Climate Strike, from September 20-27. Tied with the anti-Iraq war protests in 2003, this strike was one of the largest coordinated global protests in history, drawing over 7.6 million people to the streets of 185 countries demanding climate action according to The Guardian.

*\*See page 18 for more information on 350.org*

The mass activism of climate change has not ceased after these protests, as organizations are maintaining a strong presence on social media, urging people to tweet their state legislators and keep fighting for change. *Story by Ashley Ferrer; additional reporting by Mackenzie Quinn and Kaleela Rosenthal*

"I really hope that we let politicians know that this is an issue that we truly care about. They're starting to see that young people truly are going to come out to vote..."  
Jordan Schiff, 12  
North Broward Preparatory School

## CALL FOR CHANGE

Survey of MSD students shows they care about the environment

77%

of MSD students believe that climate change is a threat to our generation

83%

of MSD students take precautions to lessen their environmental impact

68%

of MSD students are willing to volunteer with organizations to combat climate change

Based on a survey of 358 MSD students



The Sawgrass Nature Center and Wildlife Hospital is a local animal rehabilitation center based in Coral Springs. Their mission is to foster awareness and appreciation of wildlife in South Florida. The non-profit organization can be reached at [volunteers@sawgrassnaturecenter.org](mailto:volunteers@sawgrassnaturecenter.org) for more information on volunteering.



The Sierra Club has labeled itself as a "grassroots environmental" group. They have protected 439 parks and monuments and replaced 281 coral plants since the organization's founding in 1892. The Florida Chapter Broward group does local activities like educational trips through the Everglades. Contact Local Executive Committee Chair Ina Oost Topper at [itopper2000@cs.com](mailto:itopper2000@cs.com).



Conservation Florida is centered in Gainesville and Orlando. They work with The Florida Wildlife Corridor to preserve animal life. They also are preserving rural Florida by partnering with family farms and ranches. Donations can be made online, through the mail, by buying stock and donating via text. For more information, they can be reached at [info@conserveflorida.org](mailto:info@conserveflorida.org)



The Everglades Foundation is an ecosystem preservation organization founded in 1993 by two avid outdoorsmen. Through their avid use of activism, scientific research and educational programs, The Everglades Foundation plays an important role in the restoration and preservation of one of the world's largest wetlands.



The Climate Group is an international non-profit organization founded in 2004. Their main goal is to achieve a world with no more than 1.5°C of global warming. This group specializes in the government and business side of change and strive to find ways for corporations to become more climate-friendly. The Climate Group can be contacted at [info@theclimategroup.org](mailto:info@theclimategroup.org).



# MEAN, GREEN, CARBON MACHINE

MSD's growing carbon footprint has changed how the school consumes energy

**W**ith the total number of greenhouse gases emitted from the Earth on the rise, scientists are looking at the amount of energy and resources people use within their everyday lives. One way that scientists measure total energy consumption is with the creation of a carbon footprint.

According to Time for Change, a person's carbon footprint is the total amount of greenhouse gases an individual utilizes that, both directly and indirectly, support their human activities. This includes their meat consumption, electric bills, methods of transportation and weekly expenses, among other factors. Once calculated, a carbon footprint tells a person how many Earths would have to exist to sustain their current lifestyle.

At Marjory Stoneman Douglas High School, the carbon footprint is influenced by the number of students and the size of the buildings that require resources for operation. Feeding students and faculty in the cafeteria, insulating buildings with air conditioning, powering the school with lights and electricity and copying paper for classrooms, all increase the school's carbon footprint and, subsequently, the greenhouse gases being emitted into the atmosphere.

"Our footprint is probably the second largest in the district when we are talking about schools, just because of our student population," Assistant Principal Tariq Qaiyim, who oversees facilities at

MSD said. "You can have a school full of teachers who are more conscious than a same-size school with teachers that don't care, so that would definitely be a factor in their everyday life, as well as operating the building. I think that we are probably more mindful, but also maybe more wasteful."

One factor that contributes to MSD's carbon footprint is paper consumption. Since January 2019, teachers and faculty have made a total of 3,372,889 copies; the largest number of copies made by a single teacher was 80,688, with 75,628 as a close second.

"I totally understand that at the end of the day, this is school and that some things require paper and that's fine, but when you are going to ask a three-question quiz and they are fill in the blank questions, there is no reason to use a full sheet of paper," Save What's Left President Emily Wolfman said. "Again it is a convenience thing where teachers think it is so much easier to not have to cut the paper in half or not have to use the backs of the paper and again it's understandable, but those little steps are what make the big difference."

Another major factor influencing MSD's carbon footprint is the lack of recycling occurring at the school. Instead of being picked up and set aside to be sent to the recycling plant, many custodians are throwing the recycling out with the normal trash. Similarly, some teachers do not have recycling bins, further forcing

students to throw away plastics and papers because there is no other option.

"Even though we have all of these efforts to recycle, the custodians come pick it up and throw it away like regular trash," Wolfman said. "It is really disheartening that we are putting in all of this time and effort to make the school a greener place, and the school is not following through to help the club with those plans. Also there are a lot of teachers that, even though it's so easy to just come and get a recycling bin and put it in front of the classroom, aren't doing so and now they have all of these students that have plastic water bottles, pieces of paper, all of that stuff, and have to throw it in the trash can."

To combat this issue of greenhouse gas emissions, MSD has started implementing initiatives that would help decrease the school's carbon footprint. Save What's Left picks up recycling on their own, in order to ensure that recyclables are not thrown away with the rest of the trash.

"We could definitely reduce our carbon footprint. 100%," Save What's Left Sponsor Tammy Orilio said. "We just need to get the teachers on board with simple things like shutting their lights off when they leave the room and cutting down on paper use, like that's what we are using Canvas for and just reusing paper as much as possible. Save What's Left wise, we are also going to be trying to educate the school on single-use plastics and hoping to get something going in the cafeteria to collect food waste. Community-wide, we are hoping to get something going with 'Plastic-free Parkland' [an initiative to create an eco-friendly environment within local businesses]."

At the district level, Broward County Public School's carbon footprint is mainly comprised of their electricity, transportation and lighting usage. Because BCPS regulates 286 schools, they are responsible for creating an even larger impact on the environment.

However, BCPS' Energy Conservation and Utility Management Department has implemented initiatives in order to combat their carbon footprint. The district's Energy Tools for Schools program, founded in 2008, has contributed to the reduction of the carbon footprint by 10.07%. They have achieved this by providing a monetary incentive for schools, such as money given back once they reduce their energy consumption.

"In addition to the Energy Tools for Schools, we have completed several LED lighting retrofit projects, implemented water conservation measures like remote controls and awareness, and installed 15 photovoltaic systems that promote clean energy," Energy Analyst for BCPS' Energy Conservation and Utility Management Department Gianet Puma said. "We also have an Energy Management System that allows us to control, monitor and adjust A/C schedules and temperature setpoints for optimal energy consumption."

Whether at a district, school or individual level, the smallest possible carbon footprint is optimal for environmental success. Local initiatives and programs, such as promoting recycling, decreasing paper consumption and monitoring air conditioning schedules, are all helping to decrease the total amount of greenhouse gas emissions produced by MSD and BCPS. *Story by Brianna Fisher*

**"Our footprint is probably the second largest in the district when we are talking about schools, just because of our student population... I think we are probably more mindful, but also maybe more wasteful."**

Assistant Principal Tariq Qaiyim





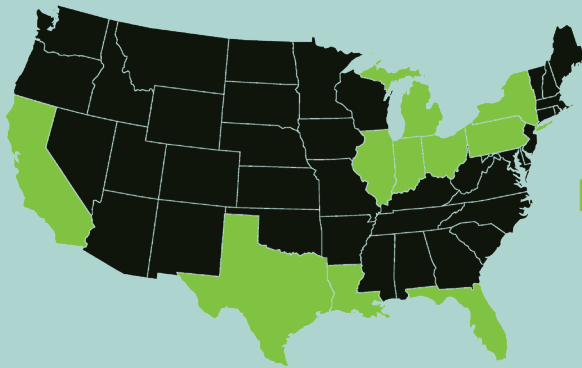
# COMPARING CARBON

Worldwide carbon emissions contribute to Earth's carbon footprint

## 10 STATES RELEASED

over 150 million metric tons of carbon dioxide into the atmosphere per year since 2016

Source: U.S. Energy Information Administration

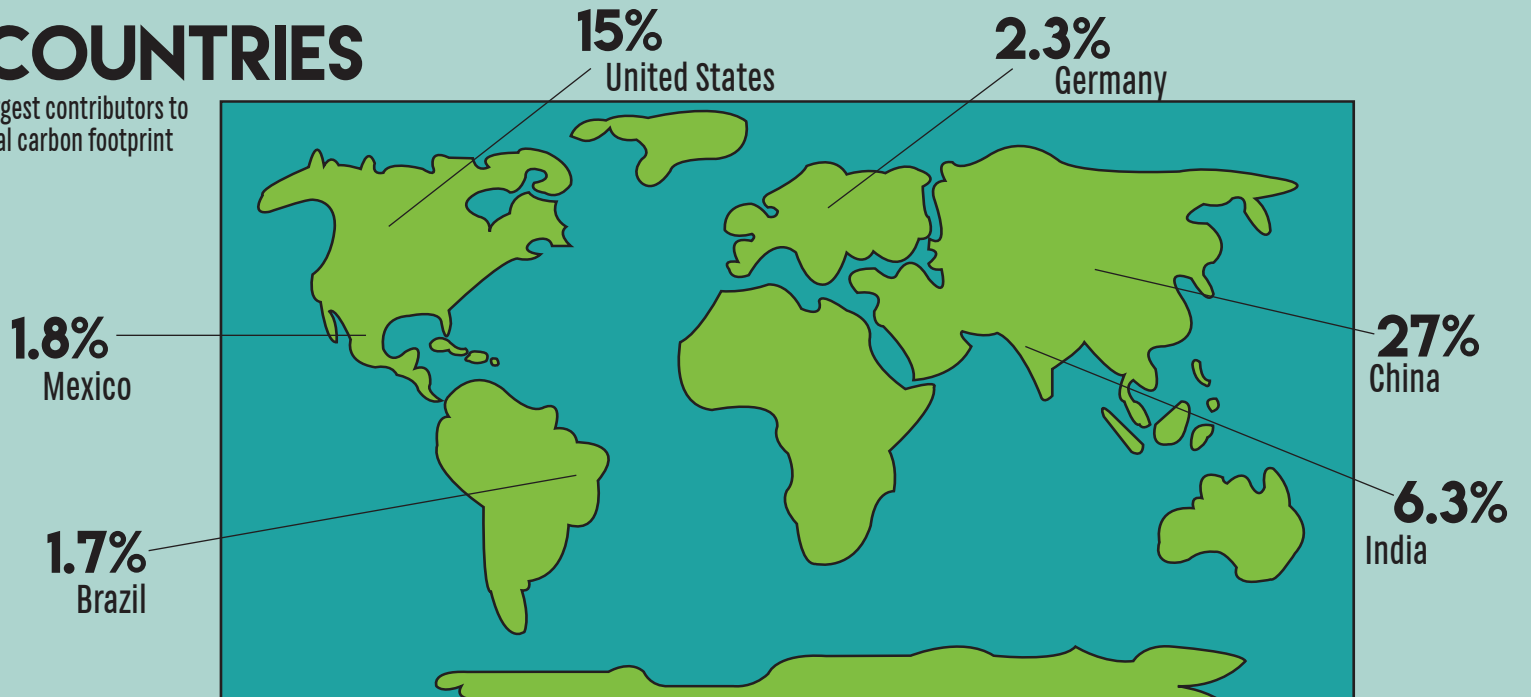


TEXAS  
CALIFORNIA  
FLORIDA  
PENNSYLVANIA  
LOUISIANA

OHIO  
ILLINOIS  
INDIANA  
NEW YORK  
MICHIGAN

## 6 COUNTRIES

are the largest contributors to the global carbon footprint



Source: Global Footprint Network

65%

of global greenhouse gas emissions are made up of carbon dioxide

25%

of global greenhouse gas emissions are attributed to electricity

15%

of global greenhouse gas emissions are released by the U.S.

Source: U.S. Environmental Protection Agency

0.998 POUNDS

of carbon dioxide are released every hour at a power plant in the U.S., on average

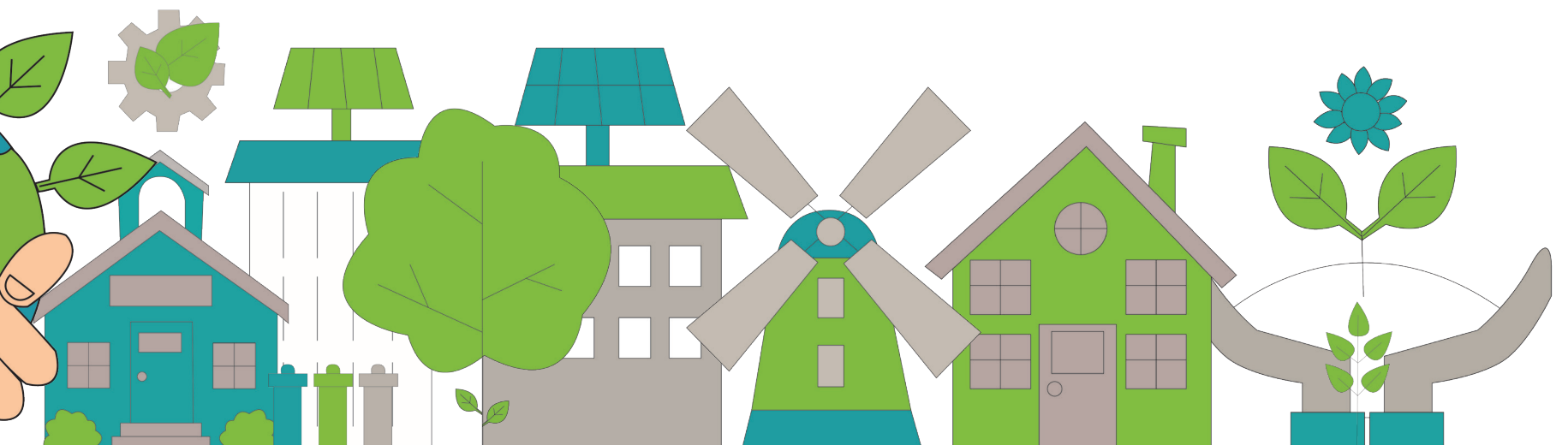
0.79 POUNDS

of carbon dioxide are released for every mile driven by a passenger car, on average

0.41 POUNDS

of carbon dioxide are released for every passenger mile flown by a commercial flight, on average

Source: University of Michigan Center for Sustainable Systems

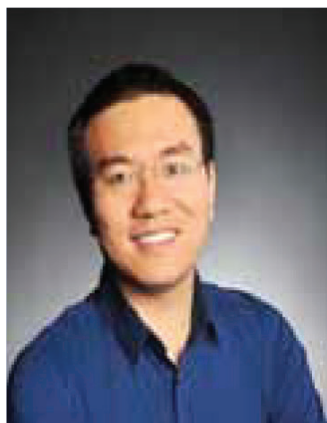






# JESSE PAN, P.A.

SOUTH FLORIDA REAL ESTATE SPECIALIST



## 954.249.9952

FORSALEBYJP@GMAIL.COM

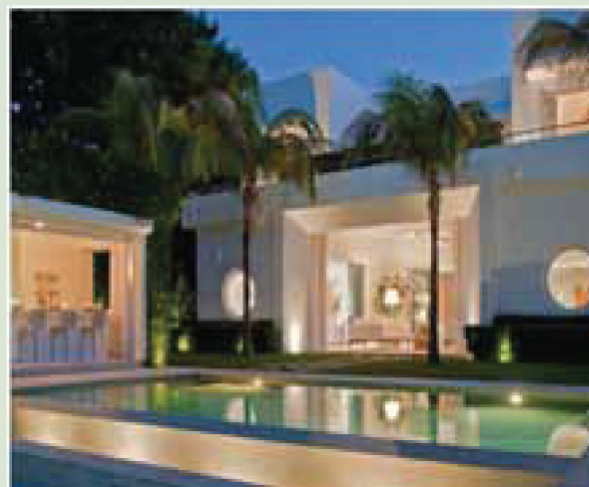
5810 Coral Ridge Drive • Suite 100  
Coral Springs, FL

CNS. ABR. CRS TRC. SRES.  
ALS. AHWD. SFR. CLHS.  
Florida Coldwell Banker Top 100 Realtor  
Coldwell Banker Top 1% Agent  
President's Premier Agent Awarded  
NRT Legends Society Awarded  
Board Director of Master Broker Forum  
Board Director 2017 RCA

***Sold over 1000 homes and more than  
\$200 millions since 2009***  
**Jesse Pan & Associates**

### When you list with us, you will receive:

- Complimentary Market Trend Analysis
- Complimentary Comparative Market Analysis (CMA)
- Complimentary Professional Home Staging Consultation
- Complimentary Professional Camera or Drone Photography
- Complimentary Professional Attorney Services
- Complimentary Marketing Director to promote your property on over 900 Websites Worldwide including: Zillow, Trulia, Realtor.com, Yahoo.com, Wall Street Journal, etc.
- #1 Real Estate Office & Market Share based on total units closed and dollar Volume in last 12 months
- Complimentary Move Out Cleaning
- Complimentary Moving Expense credit up to \$500
- Public Open House/ Broker Open House
- Weekly Showing Report & Marketing Report to Seller
- 500 or more "Just Listed " post cards mailed
- Advertising your home in Local Magazines
- Assist and/or arrange for any repairs
- A portion of my commission will donated to the charity of your choice.



### When you buy with us, Buyer will receive:

- Complimentary Home Inspection with 90 day Warranty
- Complimentary Move in Cleaning
- Complimentary Move in Professional Design Consultation
- Complimentary Attorney Consultation
- Pre-approval with preferred lender and receive a credit up to \$1000 at the closing

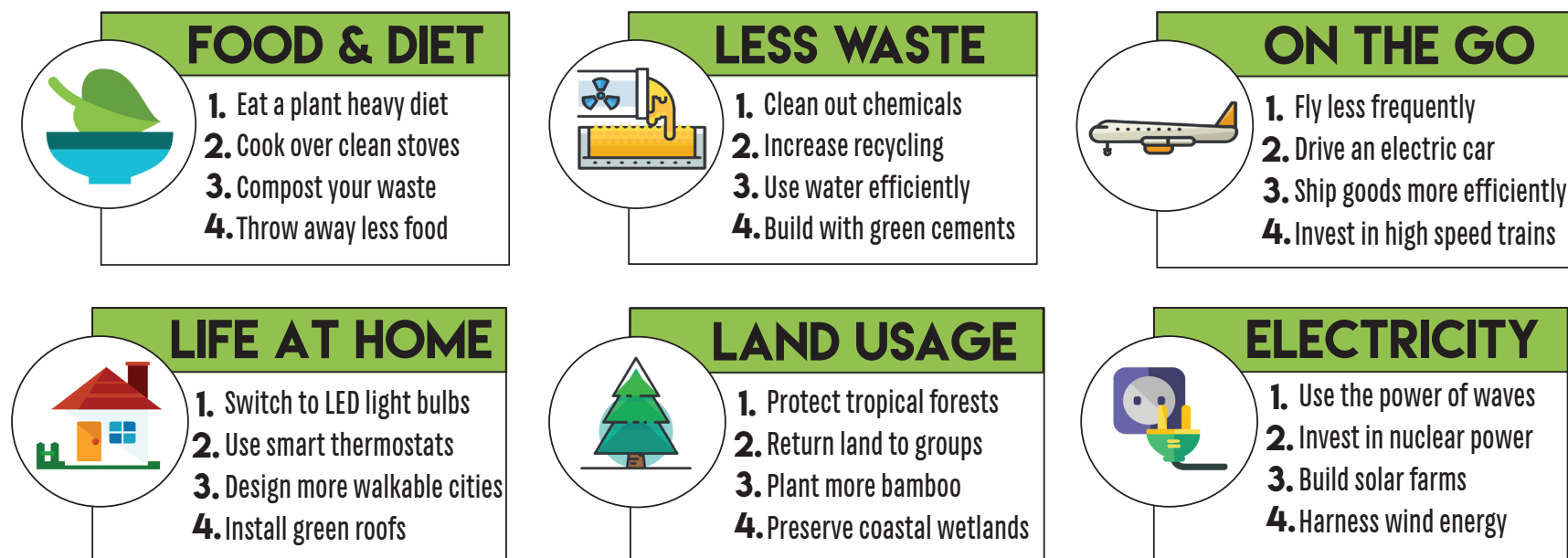




# REDUCING YOUR CARBON FOOTPRINT

Students find ways to reduce their own carbon footprints

Most effective climate change solutions ranked by category:



Sources: Project Drawdown, CNN

Other ways to reduce your carbon footprint:



## MEATLESS MONDAY'S

Giving up meat once a week can help to reduce your carbon footprint by 10%

Source: Terrapass



## EAT LOCALLY GROWN

Eating locally grown food can help to reduce your carbon footprint by 10%

Source: Terrapass



## BUY LESS FROM STORES

Buying less from the store can help to reduce your carbon footprint by 25%

Source: Terrapass



## RIDING A BIKE IS 10 TIMES

better for the environment than riding in a car

Source: European Cyclists Federation

**GLOBAL TEMPERATURE SHOULD DECREASE BY 2°C** if countries follow the requirements set by the Paris Climate Agreement



Source: Global Footprint Network

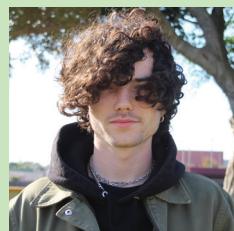
## WASHING CLOTHES WITH COLD WATER



can save up to 500 pounds of carbon dioxide per year

Source: Columbia University's Earth Institute

How do you live an environmentally friendly life?



“I try to stay away from as many plastics as I can and be as resourceful as I can. I don't want to use any chemicals that are bad for the earth... it makes you feel good too; you feel at peace.”

Dylan Cole, 12



“I spread awareness by educating my friends and letting them know about any protests and posting it on social media, as well as on the Save What's Left Instagram page.”

Faith Hartwig, 10



“I wanted to be more environmentally friendly because my mom got an electric powered car, so instead of taking the bus every day, I would just ride my bike to school.”

Brooke Baron, 10



“I have a single use water bottle, and I use bamboo toothbrushes instead of plastic ones... I also work at Gumbo Limbo Nature Center, so I preach the fact that single use plastic are very harmful for the environment.”

Nicole Alexiou, 11



## KEITH A. GOLDBLUM

ATTORNEY AT LAW

Presidential Circle, Penthouse 705-S Hollywood (954) 983-7100

4000 Hollywood Boulevard Miami (305) 532-1771

Hollywood, Florida 33021 Palm Beach (561) 832-2990

KEITH@COHENCOHENPA.COM

## American Bancshares Mortgage Cesar Suarez

C: 770.310.1639 | O: 305.826.4500 |

cesuarez@myabsm.com

www.myabsm.com

14261 Commerce Way, Suite 100  
Miami Lakes, FL 33016

## Lynn Trachtman

Independent Financial Planner

(609) 703-2022

lynntrachtman@yahoo.com



Congress Commerce Center  
601 N. Congress Avenue Ste. 112A  
& 112B  
Delray Beach, Florida 33445

Support  
561-300-1000  
support@celticcommunications.com  
Sales  
561-300-1010  
sales@celticcommunications.com

## DCDB AIRCRAFT SOLUTIONS, LLC

"God is my CoPilot on Wings of Integrity"



DANIEL BALL  
Director of Operations  
Interior Completions

561.346.2190

3067 NW 60th Street  
Ft. Lauderdale, FL 33309  
danny.dcdbaircraftsolutions@gmail.com

35% OFF  
Custom Framing!

CUSTOM FRAMING BY

FRAME-IT+

954-255-0076

10637 Wiles Road, in Brookside Plaza  
Coral Springs, FL 33076

## Dimples Bakery, LLC

Cuteness has a flavor.

Instagram: @thedimplesbakery  
sweets@dimplesbakery.com  
www.dimplesbakery.com  
(561) 281-5366

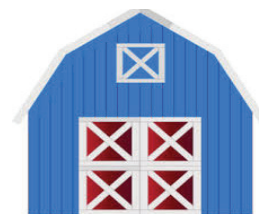
Custom Cookies

Celebration Favors

Cakes

Pastries

## Certified Pet Assisted Therapy



J's Landing, LLC  
Located in Plantation Acres  
Check out our Facebook page:  
J's Landing, LLC  
For appointments call: 954-444-4466

Green Bike USA  
The new way to commute



6601 Lyons Rd. Suite G-7  
Coconut Creek, FL 33073  
info@greenbikeusa.com  
(954) 725-7887

## Kesham + Company

10601 State St. Suite 9

Tamarac, FL 33321

Contact us at: (954) 778- 3222



# REDUCE, REUSE, RECYCLE



Save What's Left focuses on saving the environment

**W**ith a new sponsor, new members and a new attitude, the Save What's Left club at Marjory Stoneman Douglas High School is looking to make the campus a more eco-friendly place.

After being less active for the past few years, Save What's Left is welcoming back its previous sponsor, Tammy Orilio.

In the 2017-2018 school year, the club was inactive and during the 2018-2019 school year, they started back up again, collecting recycling weekly.

However, they have bigger plans for the 2019-2020 school year, aspiring to make a greater effort within not only the school community but in all of Parkland as well.

"We're talking about things we can do in the garden, and also some ideas for something called 'Plastic-free Parkland,'" Orilio said.

"Plastic-free Parkland" is a movement being introduced to the community, initiating eco-friendly environments in local businesses.

"['Plastic-free Parkland'] is allowing us to step out of just MSD in order to make a difference in the community," Co-President of Save What's Left Emily Wolfman said. "We are working with the mayor and the City of Parkland to

implement more of these initiatives."

One of their main goals for this school year is to educate the students and faculty at MSD in an attempt to make the campus more eco-friendly.

"I'm hoping that our club will spread some awareness throughout the whole school this year, and get more people on board with becoming eco-friendly," Orilio said.

The name of the club itself, Save What's Left, defines the problem that this student organization is trying to correct. According to The World Counts, a website that informs the public about environmental issues, "At the current rate of deforestation, 5-10% of tropical forest species will become extinct every decade," while "2.12 billion tons of waste is produced per year."

Save What's Left understands this issue and is trying to preserve what the world has left.

Save What's Left's doors are always open to volunteers; every second and fourth Thursday of the month, students can help the organization after school by collecting recycle bins from classrooms.

Anyone interested in making MSD more environmentally friendly by joining Save What's Left can speak to Orilio in room 633. *Story by Matthew Rosenthal*



**Making an Impact.** Co-president of Save What's Left, Daniel Bishop, empties recycling cans from classrooms into the recycling dumpster at MSD on Thursday, Nov. 14. Save What's Left collects recycling every second and fourth Thursday after school. "Save What's Left is an organization that puts the environment first in a world that is constantly trying to destroy it," Bishop said. "Recycling allows our school to do its part in the work that must be done to better the environment." *Photo by Brianna Jesionowski*

40%

of the typical school waste stream is paper

Source: American Federation of Teachers

15%

of school waste stream is glass and plastic

62%

of students at MSD recycle at home

Based on a survey of 338 MSD students

51%

of students at MSD recycle at school

Recycling is a

**\$200 BILLION** industry in the United States

Source: Recycle Across America

**9 IN 10**

people in the United States said they would recycle if it were easier

Source: Rubicon



## RECYCLABLE ITEMS

magazines  
paper  
aluminum  
cardboard  
glass jars  
steel

plastic bottles  
newspapers  
books  
ink cartridges  
CD's  
DVD's



## NON-RECYCLABLE ITEMS

styrofoam  
wrappers  
dirty tissues  
paper cups  
pizza boxes  
plastic bags

batteries  
clothing  
electronics  
food  
egg cartons  
broken glass



## AUNT MOLLY'S DISCOUNT BEVERAGE

1691 SOUTH SR 7  
NORTH LAUDERDALE, FL 33068  
954-968-7527

## WALLPAPER IS BACK!

Visit our new 6000 sq. ft. wallpaper showroom  
FLORIDA'S LARGEST INVENTORY!

Residential • Commercial • Custom • Installation

ATLANTIC  
WALLPAPER  
& DECOR

[www.atlanticwallpaper.com](http://www.atlanticwallpaper.com)

2201 W Atlantic Blvd.,  
Pompano Beach  
(between I-95 & Powerline Rd)

OPEN 7 DAYS A WEEK

954-971-0522

Since 2000

Proud  
supporter  
of The  
Eagle Eye

An MSD  
Family

**Ronkin**  
Consulting

Web Design, Print Design, Marketing  
Code, Data, Cloud

Free Estimates | [www.ronkin.com](http://www.ronkin.com)  
954.340.0946 | [consulting@ronkin.com](mailto:consulting@ronkin.com)

**Eric Servaites**  
Executive Vice President  
Broward Market Leader

**Professional  
Bank**

888 East Las Olas Blvd. Suite #201  
Fort Lauderdale, Florida 33301  
T: 954.414.0350

D: 954.414.0352 C: 954.599.1192  
[eservaites@probankfl.com](mailto:eservaites@probankfl.com)  
[professionalbankfl.com](http://professionalbankfl.com)



## SUPPORT DANCE MARATHON

My name is Brianna Fisher, and I'm participating in Dance Marathon, an event hosted in high schools and colleges around the country that raises money for Children's Miracle Network Hospital, a non-profit organization that collects funds and awareness for more than 170 pediatric hospitals across North America. These hospitals treat thousands of children each year, regardless of their illness, injury or even their family's ability to pay. My goal is to raise, \$1000, and would love if you could donate to my account! Thank you for helping to change someone's life!

<https://events.dancemarathon.com/participant/469608>

## The best gift for the holidays... Independence

Start the holidays off  
right by opening a Teen  
Savings Account

Stop by a branch or visit us at [powerfi.org](http://powerfi.org)

POWER FINANCIAL  
CREDIT UNION

**ORT AMERICA** Impact  
Through  
Education

300,000 Students annually, 35 Countries, Celebrating 140 years

Join us! [www.ortamerica.org](http://www.ortamerica.org)

Call Robin Isaacson, Florida Director @ 561-997-  
1071 or [Risaacson@ortamerica.org](mailto:Risaacson@ortamerica.org)

777 Yamato Road Suite #100 Boca Raton, FL. 33431





**Tasty Treats.** Local business Leo's Gourmet Frozen Treats sells organic and Cannabidiol (CBD) infused ice cream. *Photo by Einav Cohen*

**Super Sellers.** Local businesses set up tents to sell their products at the Parkland Farmer's Market on scheduled Sundays from November to April. *Photo by Einav Cohen*

**Good and Fresh.** A variety of seasonal fruits and vegetables are available for purchase at the farmers market. *Photo by Einav Cohen*

# LOCALS ONLY

Local, sustainable companies and farms increase in popularity in Parkland

People are always looking for the next new diet that will lead to weight loss or provide incredible health benefits. Diets and lifestyles gain popularity in waves, with many hopping on the trend that is prominent in the media. Recently, there has been a significant rise in the number of people who eat local, organic and sustainable foods.

Living a healthy and sustainable lifestyle is highly praised by Generation Z. Videos, posts and pictures of users sharing their sustainable meals have grown in popularity on a variety of social media platforms including Facebook, Instagram and Snapchat.

Many are strong advocates of eating foods that come directly from a farm without going through any regulation via store or market along the way. This ideology is known as the farm-to-table movement and it has expanded into the Parkland and Coral Springs communities.

Many believe it is both healthier for the environment and for one's individual health to eat locally, including local honey business Lip SMAKin' Good Honey. This company is run by beekeepers whose goal is to bring raw, unfiltered honey to South Florida communities via farmer's markets in Parkland, Coral Springs, Plantation and other neighboring areas.

"In this day and age we eat and drink

a lot of chemicals, a lot of artificial colors and flavors and preservatives," Lip SMAKin' Good Honey employee Jill Kareff said. "If you buy raw, unfiltered, natural honey you just get the real thing, and it's good for you, and it tastes good too."

Lip SMAKin' Good Honey claims to have the best tasting and highest quality honey because their products are fresh, unlike the honey found on the shelves in chain grocery stores. They also sell their products nationwide through their online store with the hopes of reaching more people who will shift to a more organic diet as a result.

Similarly, local and organic company Organic Grown Direct delivers farm-grown products to customers. They take pride in the delivery of seasonal fruits and vegetables as a 100% USDA certified organic business. They deliver to families all around South Florida, ranging from Jupiter to Miami.

The owner of Organic Grown Direct, who refused to give his full name, goes by the nickname "Organic Mark" and is the friendly face that greets customers at local markets.

"It's really important to eat organic if you want to be healthy," Organic Mark said.

Organic Mark and employees of Organic Grown Direct are strong advocates of repealing the Monsanto Protection Act in order to support GMO labeling.

The Monsanto Protection Act prevents federal courts from stopping the sale of GMO products even if testing proves it is dangerous for human health.

Organic Grown Direct is proud to be healthy and beneficial for the South Florida community as a CSA, or Community Supported Agriculture, business. CSA's such as Organic Grown Direct share the goal of providing fresh foods for their local community.

However, businesses and companies are not the only ones who preach the benefits of eating locally.

Senior Alex Du has eaten only organic, local goods since he was in eighth grade. His parents believe there are significant health benefits to eating locally and Du has eaten sustainably ever since. He claims to see the benefits himself too and encourages his peers to try it out for themselves.

"I think there are some benefits to it so I would encourage [eating organically and sustainable]," Du said. "I don't think it's more difficult at all."

Many students who eat organically attend the local Parkland Farmer's Market to get fresh, local and organic foods.

For example, local farmers from BioFarm Organics attend the Parkland Farmers Market biweekly to sell fresh food to the community. They cultivate a variety of fruits and vegetables as well as raise

a diverse selection of livestock such as turkeys and chickens. They also cultivate bees for honey production.

"It's about eating right... all organic, no medication, no antibiotics," BioFarm Organics founder Enoque Diaz said.

BioFarm Organic employees monitor and manage what their livestock eat in order to provide the freshest and healthiest outcomes for customers. Flocks are fed fresh grass as well as organic, non-GMO protein that varies depending on the size and weight of the individual livestock.

"We are the ones who raised them. We are the ones who did all the work, so we know what they eat," Diaz said.

Not only do BioFarm Organics focus in on the diet of livestock, but they are also passionate about treating farmland with respect. As holistic management advocates, they use less artificial products and instead rely on the land and animals to preserve the vitality of the farmland. This land management techniques also allows the soil to hold more water, increase microbe activity and produce more organic matter.

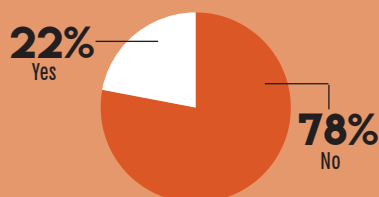
The rise of local and organic companies in South Florida has positively impacted many in the community. People are getting more eager to explore a sustainable lifestyle and diet that benefits their health, the local economy and the environment.

*Story by Katrina White*

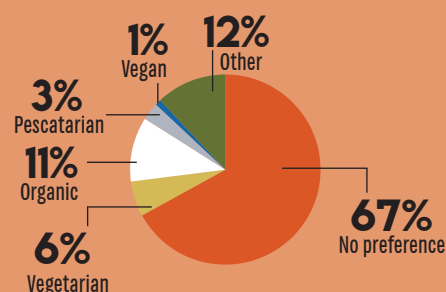
## FOOD FOR THOUGHT

330 MSD students discuss their different food habits

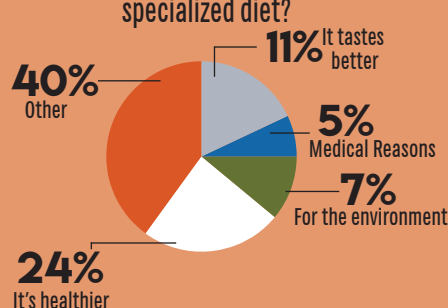
Do you have a specialized diet?



What is your specific food habit?



Why do you have a specialized diet?





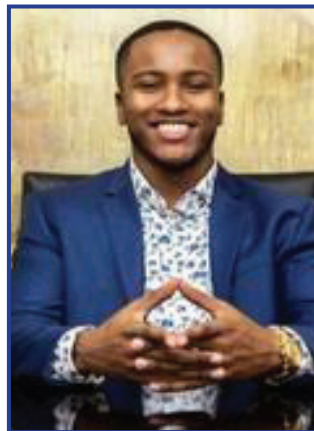


**Frankie Richard**

CAR SERVICE

954.531.9738  
Coral Springs, FL 33076

Safe & Reliable Driver  
Local, Airport & Long Distance



**LEO GAYLE**  
Realtor

954-669-2668 CELL  
954-527-5900 OFFICE  
Leo.Gayle@floridamoves.com

901 E. Las Olas Blvd. Ste. #101  
Fort Lauderdale, FL 33301



**Craig A. Pugatch, Esq**  
Managing Partner/ Member

Phone: 954-462-8000  
Fax: 954-462-4300

101 N.E. 3rd Ave., Suite 1800  
Fort Lauderdale, FL 33301

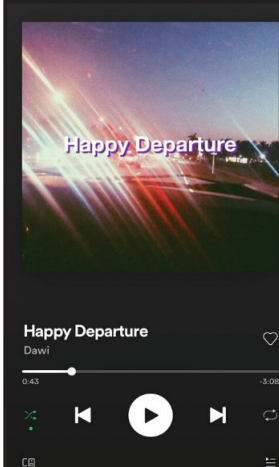
Web: <https://rprslaw.com>  
Email: [capugatch@rprslaw.com](mailto:capugatch@rprslaw.com)

**NEIL  
STEINHARDT**

Co-Founder & President  
646-732-0299  
[nsteinhardt@classwallet.com](mailto:nsteinhardt@classwallet.com)  
@ClassWallet



Class Wallet



**LISTEN  
NOW!**



INSTAGRAM:  
@THEDAWIWAVE  
SPOTIFY/YOUTUBE: @DAWI



**HOROWITZ**  
LAW

*Keeping Children Safe*

**954-641-2100**  
**[www.adamhorowitzlaw.com](http://www.adamhorowitzlaw.com)**



**Concepts in Nutrition**

Kim Geiringer, RD  
Registered Dietitian  
(917) 266-2501

[conceptsinnutrition.weebly.com](http://conceptsinnutrition.weebly.com)

[kimshealthyweigh@gmail.com](mailto:kimshealthyweigh@gmail.com)





'The Biggest Little Farm' documentary demonstrates need for ethical and sustainable farming

# SUSTAINABLE STARTUP

The documentary entitled "The Biggest Little Farm," was released to the public in theaters and festivals across the United States on May 10, 2019. The film follows a couple, John and Molly Chester, and their rescue dog, Todd, originally residing in Santa Monica, for an 8-year period on an adventure to create and sustain a farm on their own.

In conjunction with being evicted from their apartment, because of Todd's constant barking when they were out, Molly's dream of growing the food she eats and cooks with for her job led them to purchase a 200-acre plot of land outside of Los Angeles, California named Apricot Lane Farms. Obtaining this land was made possible by the donations of investors and the guidance of their mentor, Alan York.

The documentary takes the viewer through a beautifully filmed journey of the trials and tribulations of building a farm from the ground up, bearing the weight of internal and external forces.

Besides John, Molly, Todd and Alan, the film also introduces the main stars, Emma the pig, who stands out as a mother of 13 piglets, and the girlfriend of a rooster. Other characters include a large number of chickens, ducks, sheep, cows and bulls.

The film is captivating as it covers the farm throughout its growth, showcasing

the devastating winds, majestic rains and cozy sunshine that have graced the Apricot Lane Farms. Unimaginable closeups of bees buzzing around vibrant flowers and ladybugs crawling on crisp leaves, dripping with morning dew, can leave you with a sense of wonder and hope.

However, the hope that John and Molly carried with them was often challenged; first by the struggles of Emma, the pig, after she had given birth to over a dozen piglets, as well as drought seasons, battling coyotes and other predators and the untimely passing of their mentor, Alan, due to cancer.

The joyous shots of the animals coexisting were countered by a dark and eerie mood that presented itself from time to time. These included billows of smoke suffocating the land, the shooting of pests and damp landscapes. These darker images accompany the couple's constant struggle to keep the farm above water.

While the film promotes sustainable living and the ability to maintain an old-fashion farming lifestyle, John also gives insights into the difficulties and dreams to coexist with the animals and nature that surround him and his family. John is forced to deal with his actions of shooting a coyote in order to keep his chickens alive, which leads him to question his



belief of the power of an uncompromising idealism where humans and animals can lead separate but convergent lives.

John's hope for his lifestyle is to live in harmony with creatures one cannot understand nor control, especially with a newborn on the way. The idea of coexistence appears very frequently throughout the film, tying this quest of a small family and their farm to something much greater than our own selves. There were many quotes from John sporadically placed between the years of farming, but one rings truer now than ever for how we

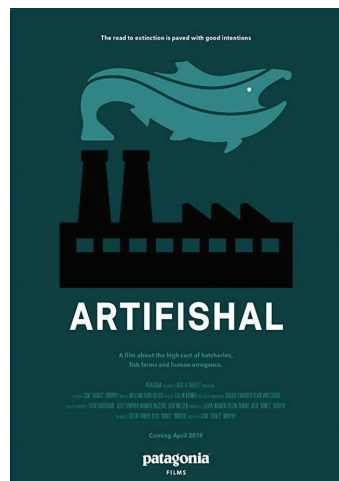
treat the planet and each other:

"If the whole thing from the beginning was to live in harmony with nature... we made it this far with a comfortable level of disharmony," John says as the film fades out. "The ecosystem of our entire planet works the same way, and when I look at it like that, it's perfect."

Everything in life has its complexities, but this film displays the necessary relationships we must create with each other and what surrounds us, in order to live in harmony. *Story by Jenna Harris; movie poster courtesy of Farmlore Films*

## FILMS FOR THE FUTURE

Documentaries highlight crucial changes needed to help environment



Directed by Josh "Bones" Murphy, "Artifishal," was released on April 25, 2019, and focuses on the negative impacts of hatcheries and fish farms on the ecosystem. One major point the film makes is the over-reliance of constructed solutions rather than natural ones. This is evident, especially as wild salmon head towards extinction. Artifishal examines the ways that humans, widely used harvesting practices and hatcheries create drastic problems with permanent consequences.

**RUNTIME:** 1 hour 15 minutes  
**WHERE TO WATCH:** Amazon Prime Video, YouTube, iTunes



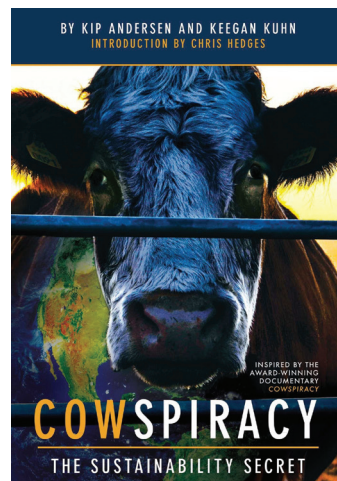
Released in May 2009, the documentary, Tapped, looks at the impact that bottled water industry has on the economy and environment. Directed by Stephanie Soechtig and Jason Lindsey, "Tapped" also hones in on the damages and ecological footprint that is stepped onto the planet through the toxic waste and by-products produced during manufacturing. Soechtig and Lindsey measure the reality of plastic that is recycled in order to understand how plastic bottles are damaging our planet.

**RUNTIME:** 1 hour 16 minutes  
**WHERE TO WATCH:** Amazon Prime Video, YouTube, Google Play, iTunes, Tubi



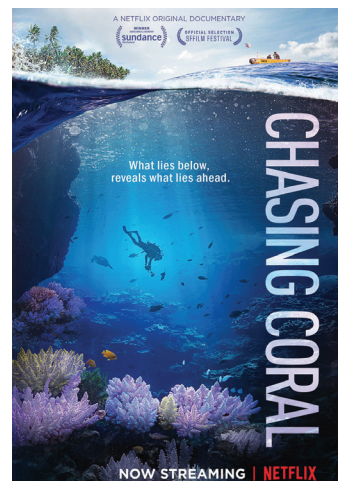
Following former U.S. Vice President Al Gore, "An Inconvenient Sequel: Truth to Power" serves as a wake-up call to the disastrous effects of global warming. Released in 2017, the documentary takes the audience behind closed doors as Gore makes relentless attempts to fight for what is right for the climate. Shots taken from all over the world show the horrendous tragedies that extreme weather has imparted on our planet, such as the flooding of the World Trade Center memorial during Hurricane Sandy.

**RUNTIME:** 1 hour 39 minutes  
**WHERE TO WATCH:** Hulu, Amazon Prime Video, Google Play, YouTube, Vudu



Released in 2014, "Cowspiracy the Sustainability Secret," directed by Kip Andersen and Keegan Kuhn, seeks to find the solution to the environmental pressures pushed onto our planet, such as animal agriculture and water usage. Andersen speaks to various environmental protection corporations that either claim they are helping the environment or are adding to the problem. Infographics and statistics are used to back up the evidence that Kip finds in order to find the truth about sustainability.

**RUNTIME:** 1 hour 31 minutes  
**WHERE TO WATCH:** Only available on Netflix



The rapid disappearance of the oceans' coral reefs is depicted in "Chasing Coral," directed by Jeff Orlowski, as he covers the loss taking place in our oceans and communities. The vanishing of these reefs can wreak havoc on the ocean's ecosystem and the animals inhabiting it. Released on July 14, 2017, the documentary follows a wide variety of people, such as divers, photographers and scientists who all have the same goal in mind—understand and figure out how to combat the vanishing reefs that are vital beyond the shore.

**RUNTIME:** 1 hour 33 minutes  
**WHERE TO WATCH:** Only available on Netflix

Movie posters courtesy of Patagonia Films, Altas Films, Paramount Pictures and Netflix



# THERE IS NO PLANET B

Climate change is a real, serious issue that needs to be addressed

Climate change is a discussion that is pushed aside by older generations and is seen as an issue that the world has more time to resolve. However, the harsh reality is that climate change is real, and we have a limited amount of time to fix our Earth.

In the simplest terms, climate change is the change in global or regional climate patterns. This means that climate change causes less predictable weather patterns and increases the number of natural disasters that occur worldwide, such as hurricanes and wildfires.

Climate change is rapidly altering the world we live in and is affecting us more than we think. People tend to turn a blind eye to the situation, but it is hard to ignore the signs of a decaying world, especially when 76 million tons of air pollutants are released into our atmosphere from the United States alone and these pollutants are impacting public health.

According to the National Center for Biotechnology Information, carbon emissions are responsible for the increase in air pollution as well as the spike in asthma diagnoses. Other factors contribute to the causation of asthma, but it cannot be denied that carbon emissions definitely play a role. If we continue this path, more children will be diagnosed with asthma and people already diagnosed will live with their condition being exacerbated by the air we breathe.

Air pollution is responsible for the decline in the health of our population and environment. Some of the pollutants in our air consist of sulfur dioxide and nitrogen dioxide. According to the Ministry for the Environment, sulfur dioxide, in particular, is linked to

cardiovascular disease.

Sulfur dioxide is mainly produced by combustion of fossil fuels such as coal and oil, and through fertilizer manufacturing, aluminum smelting and steel making. This gas contributes to the formation of acid rain. Acid rain, in combination with other environmental stressors, causes trees and plants to become more vulnerable to insects, colder temperatures and diseases.

As trees become weaker, our environment suffers and without an abundance of trees, we have no way of absorbing greenhouse gases. Greenhouse gases trap heat which results in higher temperatures and industrial activities have sped up the production of these gases. When trees photosynthesize, they absorb carbon dioxide which aids in the reduction of greenhouse gases.

These gases have vastly impacted the temperature of our planet, a key aspect of it's careful ecological balance. According to the National Oceanic and Atmospheric Administration, since 1981, the rate of decennial temperature increase has more than doubled the average increases of the previous century.

Temperature increases are especially important for us Floridians, as with increased temperatures come higher sea levels as a result of melting ice caps, which directly threaten our coast. In fact, NOAA officially predicted that by 2070, Miami streets will flood annually.

In addition, an increase in wildfires and deforestation, has made it increasingly harder for us to clean up the mess we have made. This is a vicious cycle that we cannot seem to break. Our society is driven by the manufacturing of goods and the extraction of natural resources which has caused us to no longer care about what damage is being done to the Earth.

Another part of the problem is that older generations do not care about

climate change as much as millennials and Generation Z. According to Climate Change Communication, 56% of people aged 55 or older worry about climate change in comparison to the 70% of 18-34 year olds who do.

In order to reverse the effects of climate change, people of all ages need to work together. The responsibility of tackling climate change should not be delegated to only younger generations.

Climate change does not have one specific contributor; however, when people attempt to point fingers the average person is often blamed rather than big corporations. Companies like China Coal, Saudi Aramco and Exxon Mobil Corp. are apart of the 100 firms that are responsible for 71% of the global greenhouse gas emissions in the past 30 years according to The Guardian.

Companies and politicians often criticize the general public, and make consumers feel like it's specifically their fault that the world is dying, even though it is clear corporate greed is to blame. The insatiable thirst for money by big business has resulted in our oceans being heavily polluted with fishing equipment and other trash. According to The Huffington Post, commercial fishing fleets lose approximately 700,000 tons of nets, lines and traps which accounts for 10% of ocean pollution.

The ocean is responsible for regulating the Earth's climate and because of global industrial activities we have caused a disturbance in ocean temperature and coastal ecosystems. The blatant disregard for the well-being of the Earth results in all living organisms being severely affected.

As stated by a U.S. Geological survey, if this destructive path continues, heat waves will occur at higher intensities and for longer periods of time in certain parts

of the United States. On a global scale continents like Europe will experience frequent coastal flooding and reduced production of crops in the southern region.

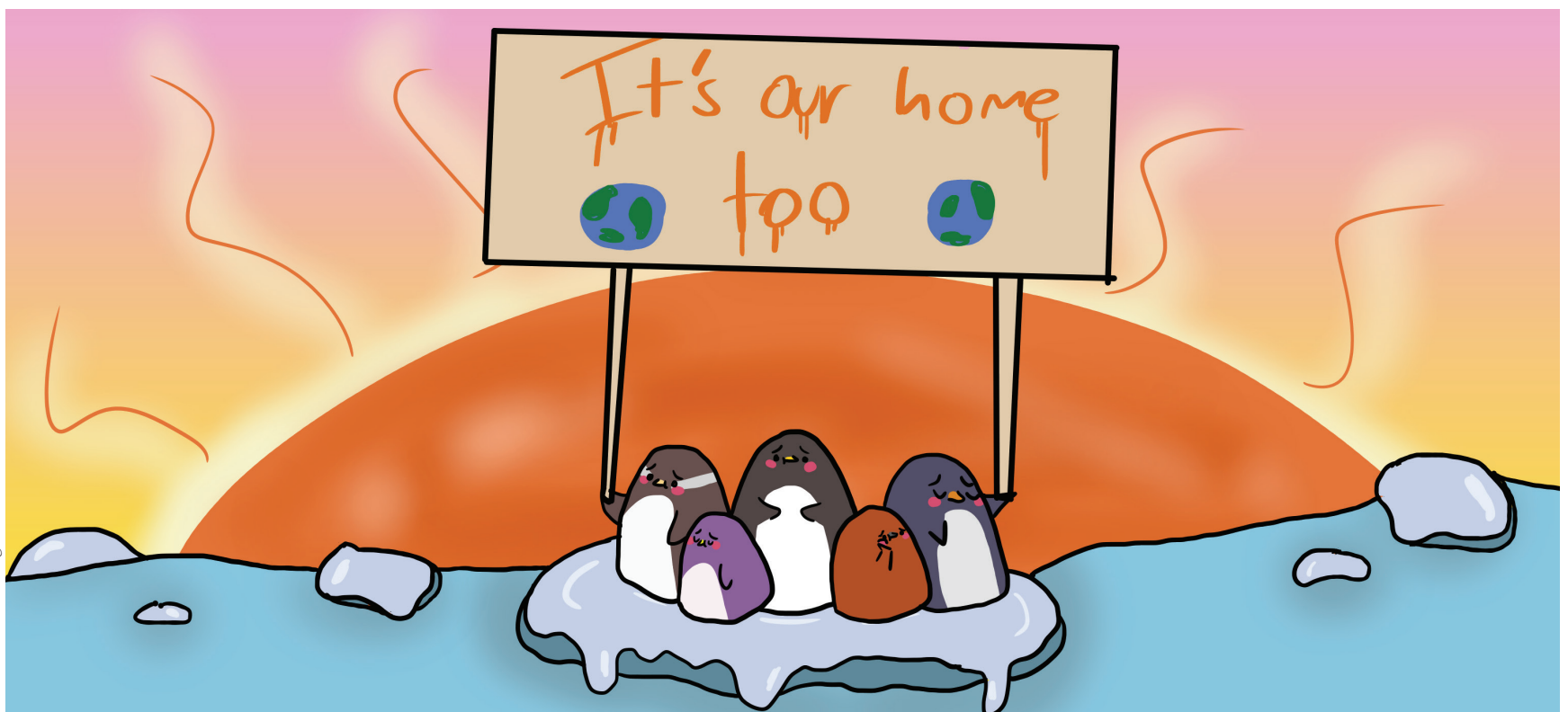
According to the Yale Environment Review the projected point of no return is 2035. However, with the path international businesses and governments are on, it seems that the point of no return will approach us much faster than we would expect.

As a whole, society disagrees on climate change and this is making it harder to combat its effects. A major reason as to why people claim that global warming is a hoax is what they perceive as inexperience with the phenomenon, with many denying the reality of global warming when they see snow fall. Shockingly, that is not true and that is not how climate change works. Regions can experience snow and cold weather even as the devastating effects of climate change continue to rise. Climate change derives from average global temperatures not from snowstorms specific to the U.S. or other regions. Therefore this argument is invalid and baseless.

Corporate greed, ignorance and a lack of urgency will be the world's demise. Climate change is a prevalent issue that we have less time to reverse the effects of. In order to combat climate change, corporations need to hold themselves accountable for their actions, and governments need to actively play a role in environmental protection.

What harm is being done if we just take the extra step to protect the environment? If you want to sit on the couch and ignore the harmful effects of climate change then so be it, but do not stop anyone else from making this world a more habitable place for future generations. *Editorial by the Eagle Eye Editorial Board*

Editorial cartoon by Leah Ronkin







Editorial cartoon by Leah Ronkin

# LET'S MAKE A DEAL

Green New Deal aims to address climate change through sweeping reform

Climate change is a common topic of discussion in current politics. Democratic presidential hopefuls have all laid out the ways they plan on tackling it. The president has tweeted about it. The science is clear: climate change is a ticking time bomb, and if we don't find ways to address it, property and life alike will be lost. Perhaps the most comprehensive plan to deal with climate change is the Green New Deal.

The Green New Deal is a potential House resolution proposed by Rep. Alexandria Ocasio-Cortez. The title is a derivative of the New Deal, the series of sweeping resolutions passed by President Franklin D. Roosevelt to end the Great Depression. Similarly, the Green New Deal aims to put a halt to climate change. The phrase was first used in 2007 by journalist Thomas Friedman in the New York Times, where he argued in favor of sweeping climate reforms.

In February 2019, Ocasio-Cortez and Sen. Edward Markey released a resolution outlining the plans for their Green New Deal. This thrust the issue into the public spotlight.

The goals discussed in the Green New Deal encompass all aspects of American

life. Clean energy is a central point of the resolution, which seeks within 10 years to eliminate pollution and greenhouse gas emissions, "as much as technologically possible;" meet 100% of energy needs with clean energy and overhaul transport to be clean. Other technological goals include improving public transport, upgrading buildings to increase efficiency, and building updated infrastructure to build resilience against climate-related natural disasters.

The Green New Deal does not limit itself to a solely technology-based solution, though. Instead, it recognizes that to bring the United States into the future, strides must also be made in human rights and equality. The most widely encompassing goal is for the federal government to provide everyone in the country with free healthcare, housing, economic security, clean water and food.

These basic human needs must be met by the U.S. government in order for all Americans to truly have the right to life, liberty, and the pursuit of happiness, as the Constitution outlines. The resolution also discusses the importance of providing higher education to all citizens of the U.S., with a particular emphasis on outreach to historically disadvantaged and marginalized communities. It advocates for racial justice and equal pay for men

and women.

These strides are absolutely necessary to make to bring America back into a position of global respect. By backing out of the Kyoto Protocol and the Paris Accords, two global agreements intended to combat climate change, America has taken the role of the Earth's grandfather: clinging on to old ways. We need to resume our position as a change-maker and a leader of progress.

Like any major proposal for reform, the Green New Deal is incredibly controversial. Most of its support comes from the Democratic party, particularly those further to the political left, such as Ocasio-Cortez, Rep. Rashida Talib and Rep. John Lewis. Republicans, including President Donald Trump, are largely opposed to the resolution.

The primary arguments against the resolution are that it is unrealistic and would be too expensive. Some have also referred to it as "socialist." Climate change deniers, who consider climate change to be a "hoax," or blown out of proportion, are also generally opposed to the Green New Deal.

These arguments, though, are generally bad-faith criticism of change for tradition's sake. Nonrenewable energy giants have their fingers in every aspect of American life, including politics. The same companies that are causing climate

change are actively opposing the Green New Deal because it would hurt their bottom line.

However, progress should not be halted purely for the sake of profits. The clean and renewable energy markets are developing quickly, and the U.S. is quickly being outpaced by China and other countries that are focusing their efforts on seizing this opportunity.

The Green New Deal could very well be expensive to start up, but the U.S. has no problem spending countless billions of dollars on military conflicts and tax cuts for the wealthy. It is only when progress is on the menu that politicians begin to loudly complain about the proposed resolution.

Climate change is an urgent and growing threat currently going unaddressed by the U.S. government. It is destroying ecosystems and worsening natural disasters. People are dying in hurricanes and wildfires that will continue to worsen, if we do not reduce greenhouse gas emissions.

This is an enormous and complex problem, and it needs a solution on an enormous and complex scale. The Green New Deal provides a well thought-out and well-planned solution that would reshape America into a giant prepared to face the future and make it better. *Editorial by the Eagle Eye Editorial Board*

## ONE STEP AT A TIME

MSD should be taking steps to reduce its carbon footprint

Nicknamed "Mother of the Everglades," Marjory Stoneman Douglas dedicated her life to protecting the environment. As a school that was named after her, the inhabitants of Marjory Stoneman Douglas High School should make more of an effort to be environmentally sustainable, which starts with reducing our carbon footprint.

With climate change becoming a globally pressing issue, MSD needs to work towards developing more sustainable methods of decreasing the school's carbon footprint.

Since the start of 2019, teachers and staff at MSD have made a total of 3,372,889 copies of paper, yet those same individuals

have access to Canvas, an online classroom where they can assign and receive student work electronically.

Canvas is the perfect solution to reducing the amount of paper that is wasted, and all teachers should be utilizing the technology, instead of further increasing MSD's negative impact on the environment.

While the club "Save What's Left" at MSD collects recycling weekly from each classroom, that is simply not enough. Another way to reduce MSD's carbon footprint would be to place recycling cans throughout campus for students to take advantage of.

Students are oftentimes compelled

to throw away their recyclables in regular trash cans in the cafeteria and the courtyard, because the only places recycling cans can be found on campus are in teacher's classrooms and by the loading docks, where students are not permitted to go.

Additionally, the air conditioning at MSD is constantly running at temperatures unnecessarily low. According to the Department of Energy, a house should be set at 78 degrees when people are inside. Yet at MSD, the average classroom temperature is 66 degrees. The Eagle Eye measured classroom temperatures across campus finding the lowest air temperature flowing from a

vent to be 57 degrees.

While it has been proven that colder temperatures promote learning and the ability to focus, there is no need for classroom temperatures as low as 62 degrees when the Department of Energy recommends a much higher temperature to conserve energy and protect the environment.

MSD along with BCPS need to be more conscious of their carbon footprint and take any necessary steps to reduce it. The clock is ticking, the time is now to step up and work towards helping the environment instead of further destroying it. *Editorial by the Eagle Eye Editorial Board*



## Connected Business Solutions

Office Imaging Products

**Rob Squiccirini**

4100 N Powerline Rd L-2  
Pompano Beach, FL 33073  
www.myconnectedbiz.com

954.993.6422  
rsquiccirini@myconnectedbiz.com

Need Help Raising Money? Contact Us Today About Fundraisers!



Show Your Stoneman Douglas Student I.D.  
And Receive 10% OFF Your Entire Order

4608 N University Dr | Coral Springs | 954.688.9780

**Lead Current™**  
Electrify your Business



**MATTHEW GERTLER**  
Vice President

Tel (954) 456-7400  
Cell (954) 913-4108  
General Fax (954) 983-6049  
Matthew.gertler@supremehrs.com

2700 SW 32nd Avenue  
Bldg D - Bays 7-11  
Pembroke Park, FL 33009

www.supremehrs.com



(954) 650 0556



**CROSSPOND  
CONSTRUCTION**

(954) 369-4244  
info@crosspondllc.com

Remodeling & Handyman  
Check Nextdoor for recommendations

## Maria's Babysitting



Cell: (754) 715-0242  
Email: mariajv33@gmail.com



## GLAMBAR

BLOW DRY & MAKEUP

**Erin Martin**

Founder & CEO  
215-805-0415

Erin@glambarsfl.com  
www.glambarsfl.com

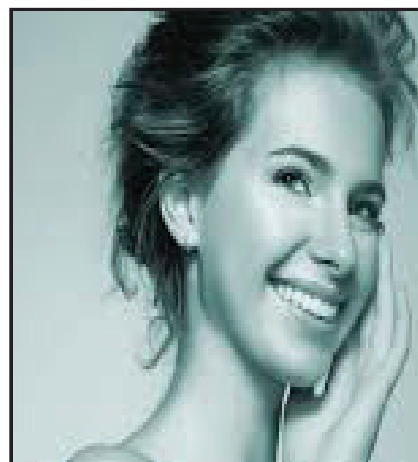
**Florida  
Air Masters, Inc.**

Sales & Services of  
Air Conditioning- Heating  
Commercial Refrigeration  
Insured \* FL License-CAC057523

**Dan Ruspantini**  
(954) 796-0332

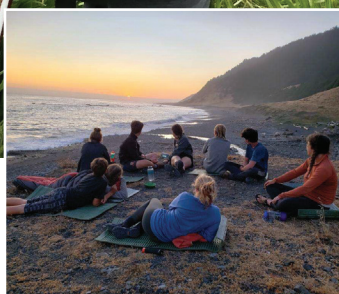
Cell: (954) 796-4116

flairmasters@aol.com



**VIO  
MED SPA**





**Take a Hike.** Junior Anna Crean and her peers from her Adventure Trek Tour walk through a field of tall grass in Trinity National Forest. *Photo courtesy of Anna Crean*

**Reaching Her Peak.** Senior Mandi Jaffe poses on The Tour Du Mont Blanc in Chamonix, one of Europe's premiere alpine treks in Italy. *Photo Courtesy of Mandi Jaffe*

**Seas the Day.** Adventure Treks tour participants relax on the Lost Coast in the California North Coast after a ten day hike. *Photo courtesy of Anna Crean*

MSD student and staff participation in outdoor activities creates healthier lifestyles

# FUN IN THE SUN

**I**t seems although Generation Z is often labeled as a tech-savvy group preoccupied with phones and laptops, certain individuals look to nature and outdoor activities as a way of escaping a technology-obsessed society.

Recreational activities such as kayaking, hiking, camping and fishing are often outlets for students to participate in outside the new normal world of social media full of likes and comments.

"I feel like the tech and social media we use today takes away from our generation from being active," senior Mandi Jaffe said. "People are less likely to be active when they have millions of other things to do with the help of technology."

According to Healthline, studies have linked the use of social media to depression, anxiety, poorer sleep quality, lower self-esteem, inattention, and hyperactivity—often in teens and adolescents, which can be reduced and prevented with outdoor activities.

"I feel like outdoor activities benefit people's health both mental and physical.

It's great to be able to take a mental break and be able to hike without thinking," Jaffe said.

As stated in Harvard Health Publishing, physical activity can help reduce stress and prevent certain cases of depression and can reduce anxiety.

"Fishing has allowed me to gain knowledge and strength unobtainable to those who haven't experienced it. The sport teaches you to have patience and discipline as well as self control," freshman Nick Collela said. "Fishing may not be as physical or popular as sports like basket ball, but can be even more beneficial."

At Marjory Stoneman Douglas High School, certain individuals put down their cell phones to enjoy mother nature.

"My favorite outdoor activity is kayaking," Jaffe said. "I love the thrill of going through rapids and experiencing the river life. Being able to judge the river lines, doing tricks and rolls is extremely exciting to me."

Junior Anna Crean goes backpacking during her summers. Through her

experiences, she has explored places such as Northern California and the Pacific Northwest by foot.

"It's a huge challenge pushing yourself to hike for hours with a bunch of weight in your back, but once you're done it's the most rewarding feeling because you get to stay and beautiful secluded areas that not many people have seen," Crean said.

According to a study published in the International Journal of Environmental Health Research, spending just 20 minutes in a park even if there is no physical activity being performed is enough to improve one's well-being.

"I like to be out in nature with fresh air. It just makes me feel good, biology teacher Adeena Teres said. "It's beautiful and I find it enjoyable and relaxing. Right now I do a lot of running. Every Saturday morning I run down by the beach and then I like going to parks and bicycling."

Maintaining a healthy lifestyle is vital because it can help lower one's chance of getting diseases later on in life such as heart disease, strokes and type 2

diabetes. Physical activities like walking, running, swimming and biking has numerous benefits.

As specified in Harvard Health Publishing, these activities can help the body burn calories instead of storing them as body fat, keep blood sugar levels more balanced and in a normal range, lower blood pressure and cholesterol levels, keep bones and muscles strong and prevent serious health problems that can arise from being overweight or obese.

South Florida is accommodating when it comes to outdoor activities. There are numerous hiking trails by the Everglades, such as the Atlantic Trail Entrance to Conservation Levee Greenway and many lakes to go fishing on.

"I think people would appreciate the environment more and do more things to protect it if people became more active outdoors," Teres said. "Now, everyone seems to be on their phone or inside watching a movie and are losing that touch with nature." *Story by Leni Steinhardt*



SCREEN PRINTING

SPIRIT WEAR

ONLINE TEAM STORES

561.271.0747  
tjsds@yahoo.com



954.536.8253  
hjwalk7@gmail.com

providing custom apparel since 2008



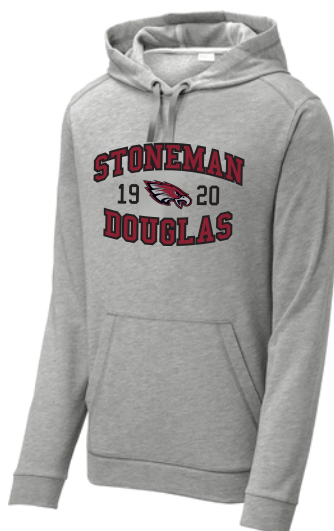
TEE SHIRTS



LONG SLEEVE TEES



1/2 ZIP PULLOVERS



HOODIES



MOISTURE MANAGEMENT



JACKETS

\* HATS \* ACTIVEWEAR \* BAGS \* OUTERWEAR \* ACCESSORIES \*  
\* SPORT TEK \* NIKE \* HOLLOWAY \* DISTRICT \* COMFORT COLORS \* AND MORE \*

JOHNNYMASCOTS.COM

EMBROIDERY

SUBLIMATION

SPORTS UNIFORMS



Denise LoFurno  
Sales Consultant



954.444.3354 - Direct  
954.334.4622 - Office  
888.641.4288 - Fax  
Denise@LoFurnoRealEstate.com

5691 Coral Ridge Drive / Coral Springs, Florida 33076

## Develop Better Study Habits

Helping Kids Learn How to Learn

Help your middle and high school child get ahead by studying smarter and becoming more organized. Presented successfully for more than 16 years, this one-on-one, three-hour program taught over two sessions, has helped hundreds of school children develop better study habits and attain higher grades. All students receive their own "Better Study Habits" handbook.

### TOPICS COVERED INCLUDE:

- Homework completion and follow through
- Organization
- Reading from the textbook
- Study techniques
- Test-taking strategies
- Understanding your learning style
- Time Management



For more information, call  
Robert Fass, LPC • 609.577.8909  
Former Teacher and School Counselor, Program Developer and Presenter  
betterstudyhabits.net





**Devastating Defeat.** MSD's football team takes on Plantation High School during the senior night game on Friday, Nov. 1 at Cumber Stadium at 7 p.m. The Eagles lost to the Colonels 39-10. Photo by Jenna Harris

# HISTORY MADE AT MSD

MSD football team proves doubters wrong in historic 2019 season

In August, if you were to tell any Marjory Stoneman Douglas High School student that their varsity football team would make it to the playoffs for the first time in 12 years, they would have said you were crazy.

Last year's varsity football season ended with no entry into the playoffs and only five wins. It did not have hype. It did not have hope.

MSD's football program embodied mediocrity.

In stark contrast, MSD's 2019 team experienced a truly unique and unexpected level of success on the field.

This year started with a new look and feel to the team. Unprecedented achievement spanned all the way from the offense to the defense and the coaching staff as well.

"In previous years, it never quite seemed to come together as much... I believe previous teams were a bit more one dimensional. If a particular scheme didn't work in the past, it didn't feel as if the team and coaching staff had any alternative but to simply continue the same plays and just hope for a better result," announcer and analyst Frank Krar said. "This year's team was more adaptable in my opinion, and could generally adjust their offensive approach to overcome opposing defenses."

With this unique attacking scheme and a new wave of talent, MSD challenged the impossible every week of the season.

Doing what many thought was impossible in winning eight straight games, averaging a 15-point margin of victory, having two shutouts and beating all of the rival schools in the division, MSD

truly made history this year.

"I've been to almost every single home game this year and there has been an elevated level of energy to match the level of play on the field," senior Sam Hendler said. "Our team has rallied and given us a season to remember."

Ever since the beginning of the season, previous years' results did not phase the MSD Eagles one bit; rather, it motivated them.

The Eagles powered into the 2019-2020 school year, hitting the weight room and putting in work to break through the glass ceiling. The team grew hungrier by the week and was chomping at the bit to hit the field.

However, this feeling was stalled before the season could kick-off, as mother nature had other plans. An untimely rain-out of the season opener forced the Eagles to maintain that hunger one week longer.

On Friday, Aug. 23, the Eagles finally got the chance to show what they were about at Colonial High School, pulling out a late 38-34 win.

"To be able to go up to Orlando for the season opener and secure a win wasn't just exciting, it was satisfying," tackle Anthony Erale (66) said. "Everyone on the team has been grinding like crazy for the last seven months to make this the season Douglas becomes a playoff team."

Two weeks later, MSD jumped out early on Cypress Bay High School, taking the Lightning down with a final score of 30-16.

"It's so important to get a win like that because it gives us so much momentum going into the next week," tight end Ryan Belk (80) said. "[Monarch] is a big cross-town rival, so it was important to win that. We need to stay focused though and stay humble and keep going week by week."

Back-to-back home games suited MSD well, too. First, a close win over Monarch High School, which set the tone for the

rest of the season occurred. Then, a blowout over Coral Springs High School in the Pig Bowl gave the Eagles their fourth win.

The Pig Bowl marked a point in the season where MSD knew they had become a true playoff contender. They proved they were a threat to other teams within their district.

J.P. Taravella High School posed no threat to MSD, as the Eagles took down this cross-town rival by 22 points. This gave MSD huge momentum just in time for the Homecoming game.

"The game meant everything to us after them beating us in a super emotional game last year," linebacker Ryan Schroy (34) said. "We came into their house this time and ruined their Homecoming, which was the best medicine for a [2018] loss that still hurts."

The Homecoming game at MSD this year was buzzing. The energy was matched with a huge shutout over West Broward High School, with the Eagles winning 36-0.

The following two away games against Nova High School and Coral Glades High School were quite impressive for MSD as they won both handily.

"Having back to back shutouts and another big win has really given the offense and defense confidence going into the district championship game and state playoffs," quarterback Matt O'Dowd (4) said.

Following eight straight wins, the MSD Eagles faced Plantation High School in a high stakes match-up in the 2019 season finale.

The scene was set and MSD had a chance to win one of its most momentous games of all time.

An early lead in this game led many of the fans in attendance to assume that once again MSD was going to roll their

opponent.

As a shock to many, by the conclusion of this game, Plantation had bested MSD, 39-10.

An overwhelming response to MSD's early lead by the Colonels and an explosive offensive attack stunned the Eagles, and just like that, MSD's undefeated season was over.

This was a tough end to the regular season for MSD, but it did not take away from the incredible overall achievement of this team.

The Eagles then had their chance to break through the glass ceiling in the playoffs with a home matchup against Miami High School on Friday, Nov. 8.

However, this game did not go the Eagles' way, seeing a lopsided loss in a battle that exposed MSD's lack of postseason experience in a 28-3 shellacking.

"It didn't end the way we wanted it to, but it was great for these guys. We had a lot of success [this season] and it was really positive," Head Coach William Short said.

Regardless, MSD broke records this season and is looking toward the future, hoping to do the same and more in seasons to come.

This hope spans from the team to the student body and to the staff as well.

"Overall, I liked the attitude and spirit the team displayed this year. There were fewer mental errors, in particular, silly personal and unsportsmanlike fouls were way down," Krar said. "I like where this team is headed, and I'm hopeful they can keep this year's momentum and build on a great season."

With a hopeful outlook for the future, MSD will strive to return to glory next year, despite the loss of key seniors and a long off-season to work through. Story by Charlie Goodman



